



Catalogue

RELIABLE & SUSTAINABLE ENERGY SOLUTIONS



Visit our website : www.imaxxenergie.com

0977-851-2079 / +63 2 8990 2048

U-602, FSS 1 Building
#20 Scout Tuason cor. Scout Castor Streets,
Barangay Laging Handa, D4, Quezon City
Philippines, 1103



PHOENIX CONTACT

Powering the All-Electric Future

Reduce costs, increase efficiency, and
protect the environment.



TRIO-PS/1AC/24DC/ 5 POWER SUPPLY | 2866310





UNO-PS/1AC/24DC/150W POWER SUPPLY | 2904376





QUINT-PS/1AC/24DC/20 POWER SUPPLY | 2866776





QUINT-PS/1AC/24DC/10 POWER SUPPLY | 2866763





QUINT-PS/1AC/24DC/ 5 POWER SUPPLY | 2866750





TRIO-PS-2G/1AC/24DC/20 POWER SUPPLY | 2903151





TRIO-PS-2G/1AC/24DC/10 POWER SUPPLY | 2903149





TRIO-PS-2G/1AC/24DC/5 POWER SUPPLY | 2903148





QUINT4-PS/1AC/24DC/1.3/SC POWER SUPPLY | 2904597





UNO-PS/1AC/24DC/ 60W POWER SUPPLY | 2902992





QUINT4-UPS/24DC/24DC/20 | 2907071 UNINTERRUPTIBLE POWER SUPPLY





QUINT-UPS/24DC/24DC/5 | 2320212 UNINTERRUPTIBLE POWER SUPPLY





UPS-BAT/VRLA/24DC/12AH BATTERY MODULE | 2320322





UPS-BAT/PB/24DC/12AH BATTERY MODULE | 1274119





Multifunctional energy measuring device with direct Rogowski connection and integrated Modbus/TCP and EtherNet/IP™ interface for measuring electrical parameters in low-voltage installations up to 690 V

EEM-MA771-EIP | 2908302 MEASURING DEVICE





EEM-MA770-EIP | 2907953 **MEASURING DEVICE**





EEM-MA770 | 2907945 **MEASURING DEVICE**

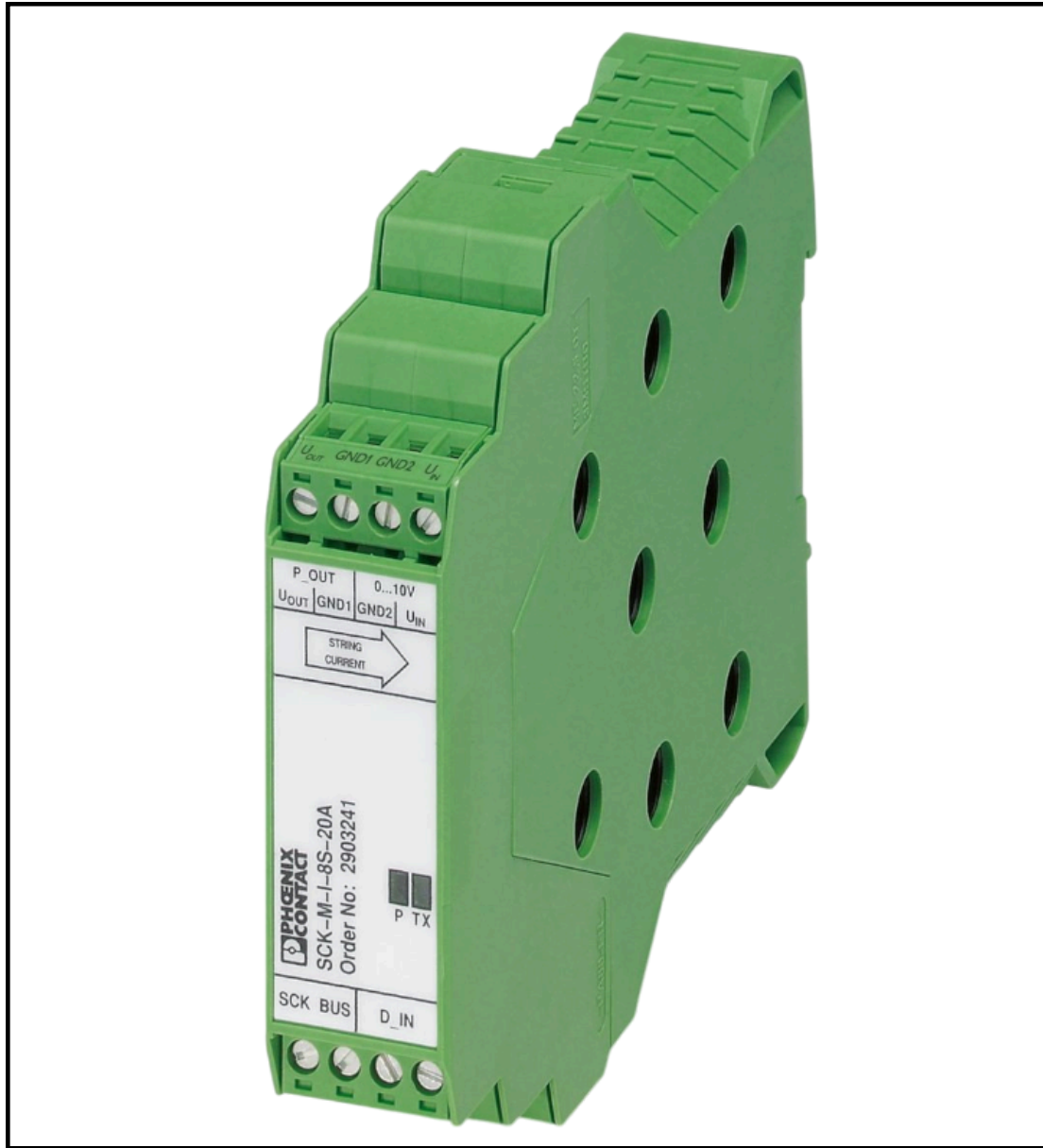




Fuse, nominal current: 25 A
19.1Lx5Wx18.8H mm

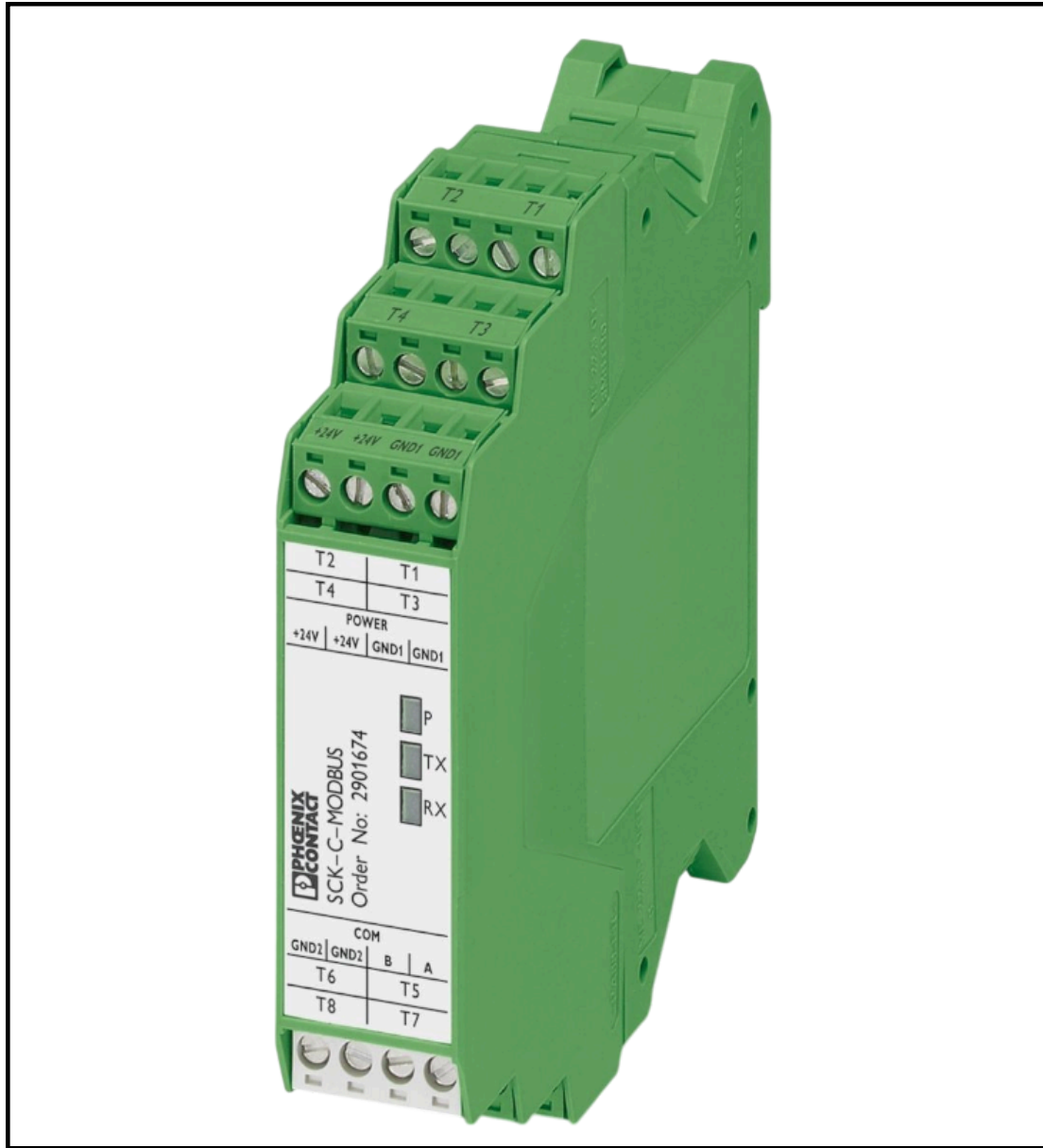
FUSE 25A/32V ATOF
FUSE | 2908366





SCK-M-I-8S-20A - PV STRING MONITORING MODULE | 2903241





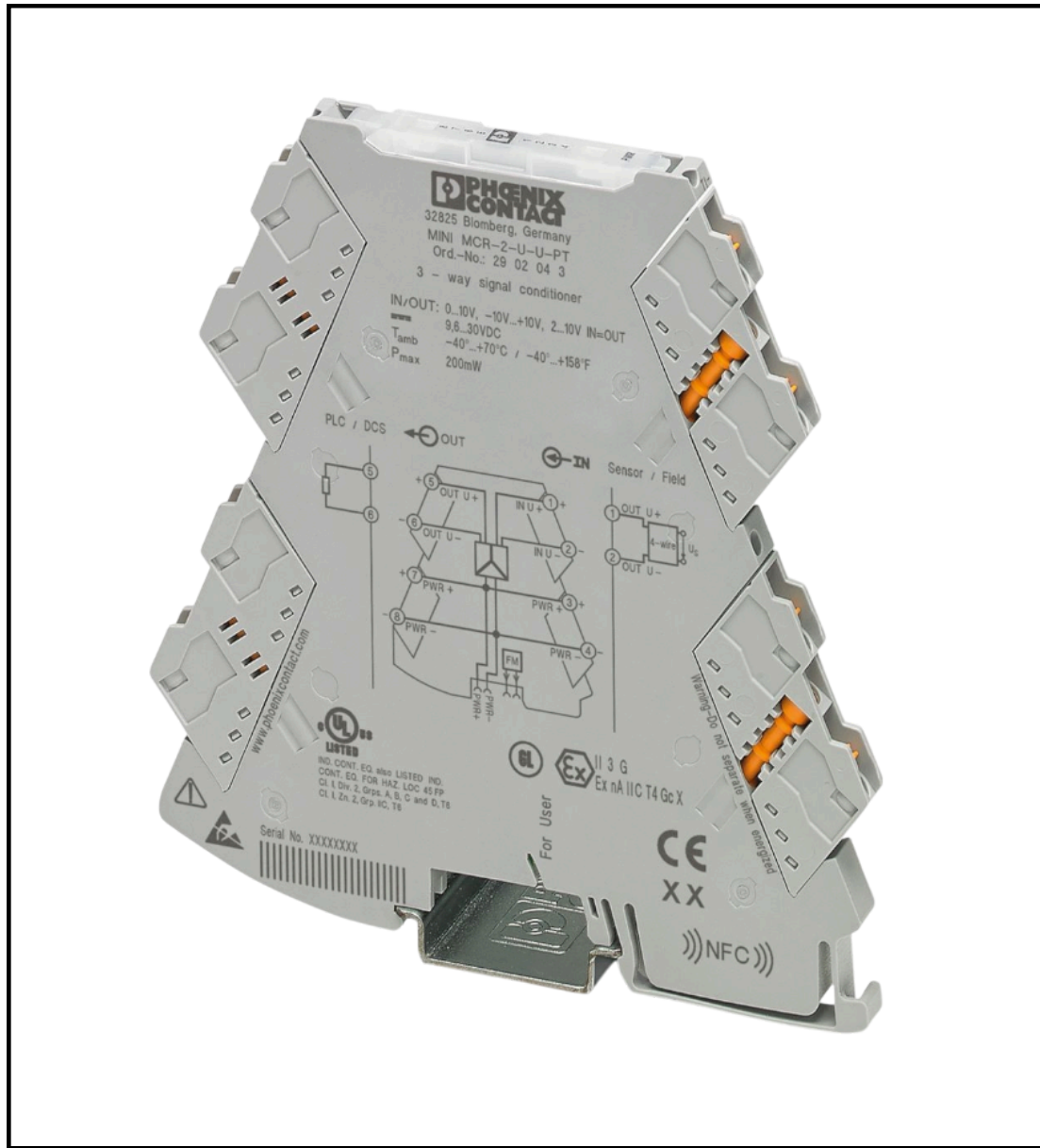
SCK-C-MODBUS - PV STRING MONITORING MODULE | 2901674





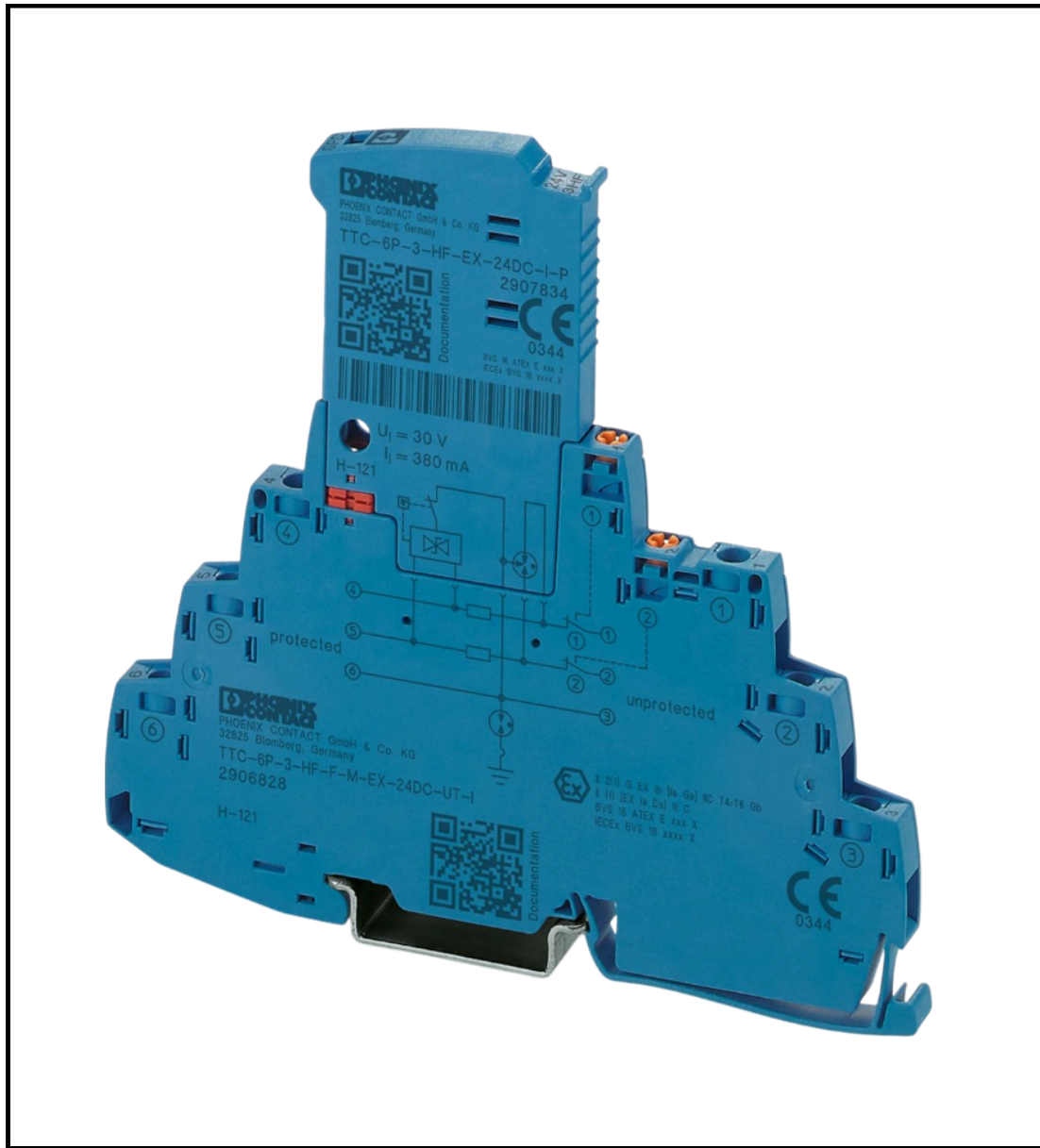
SCK-M-U-1500V - PV STRING MONITORING MODULE | 2903591





MINI MCR-2-U-U-PT SIGNAL CONDITIONER | 2902043





TTC-6P-3-HF-F-M-EX-24DC-UT-I - SURGE PROTECTION DEVICE | 2906828





PLT-SEC-T3-24-FM-UT | 2907916 TYPE 3 SURGE PROTECTION DEVICE





VAL-SEC-T2-2+0-48DC-FM | 2907865
TYPE 2 SURGE ARRESTER





VAL-SEC-T2-2C-350 | 2905342
TYPE 2 SURGE ARRESTER





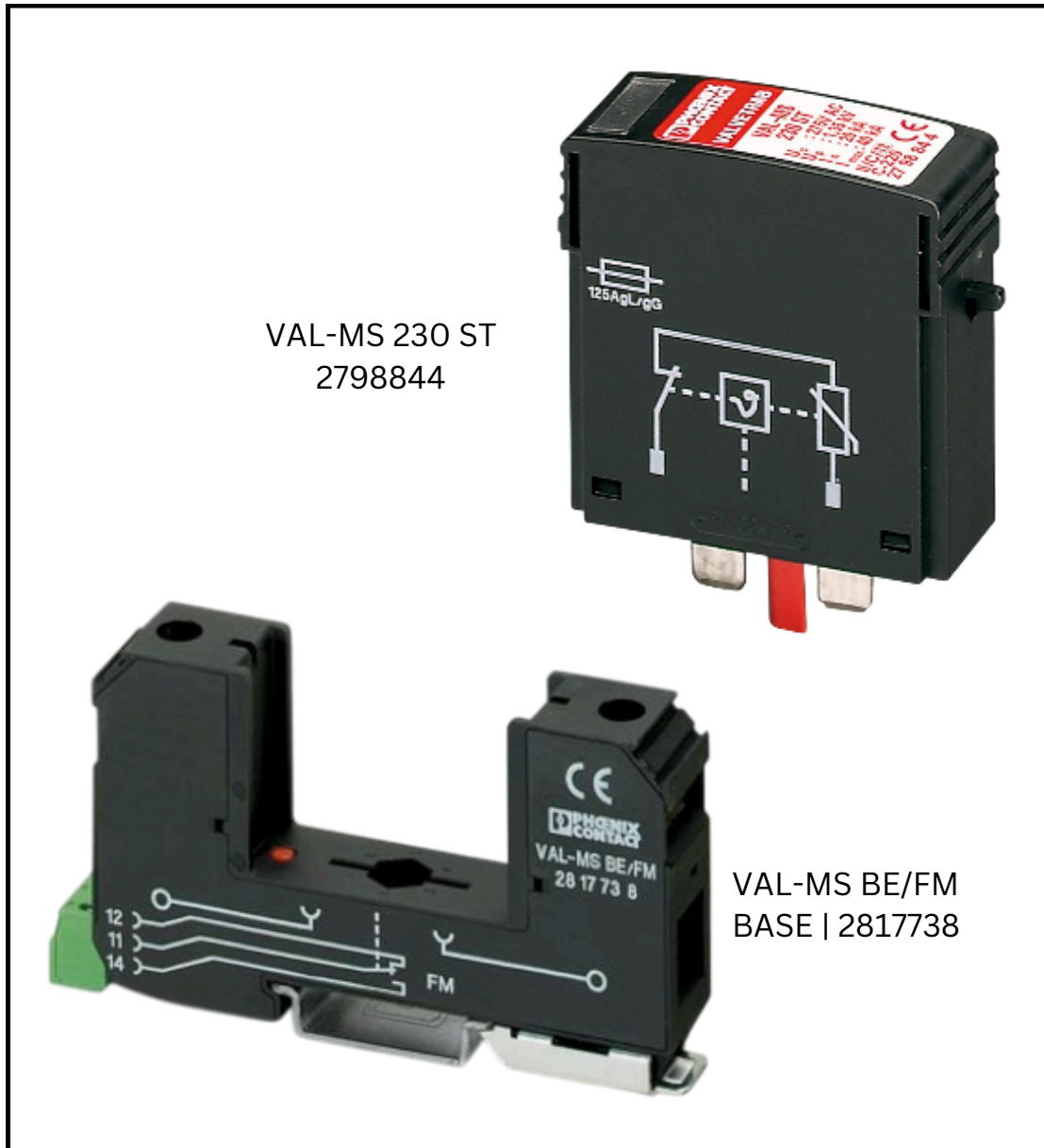
VAL-SEC-T2-3C-350-FM | 2905339
TYPE 2 SURGE ARRESTER





VAL-SEC-T2-2C-175-FM | 2905350
TYPE 2 SURGE ARRESTER





VAL-MS 230 ST
2798844

VAL-MS BE/FM
BASE | 2817738

**1 LOT VAL-MS 230 ST | 2798844
TYPE 2 SURGE PROTECTION PLUG
WITH VAL-MS BE/FM | 2817738
TYPE 2 SURGE PROTECTION BASE ELEMENT**





DT-UFB-V24/S-9-SB | 2803069
SURGE PROTECTION DEVICE





C-E1 6A | 0903028
ELECTRONIC CIRCUIT BREAKER





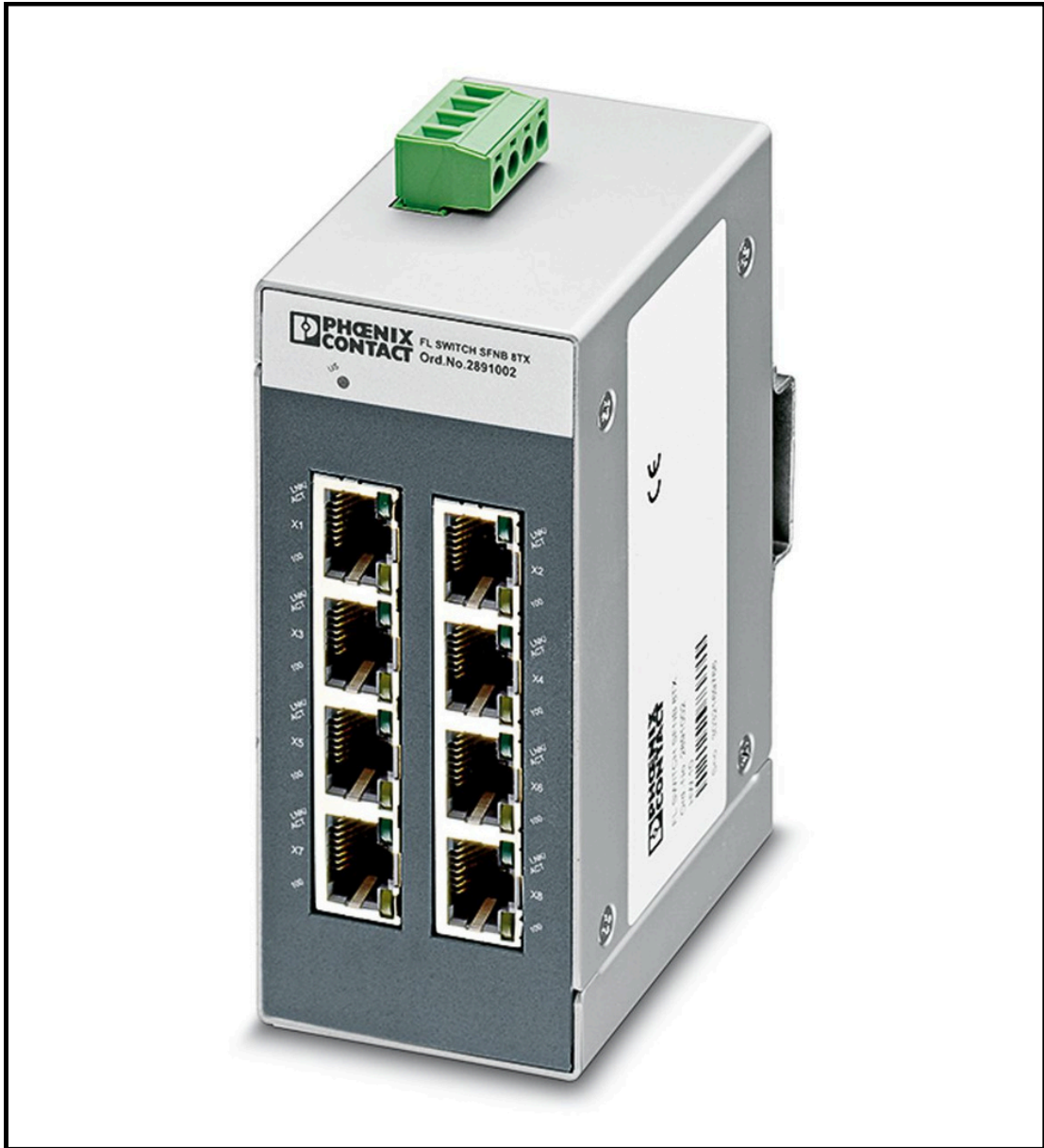
EC-E1 0,5A | 0903022
ELECTRONIC CIRCUIT BREAKER





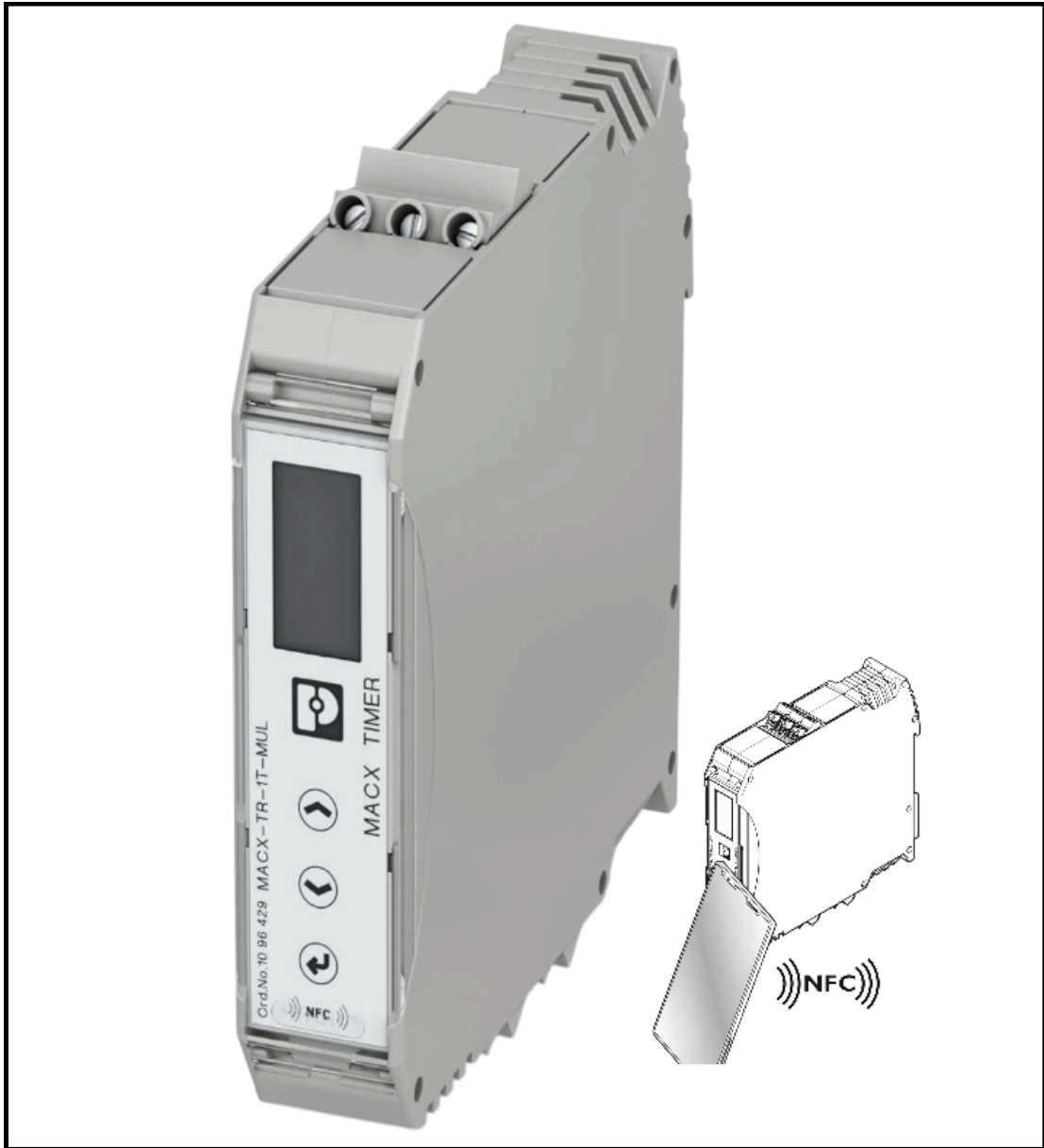
FL SWITCH SFNB 5TX | 2891001 INDUSTRIAL ETHERNET SWITCH





FL SWITCH SFNB 8TX | 2891002 INDUSTRIAL ETHERNET SWITCH





MACX-TR-1T-MUL TIMER RELAY | 1096429





WMS 3,2 (EX5)R | 0800290 SHRINK SLEEVE





WMS 2,4 (EX4)R | 0800289 SHRINK SLEEVE





SZS 1,0X6,5 VDE | 1205079
SCREWDRIVER



**THERMOMARK
INK RIBBON**



110 - 0801371



110 - 0801358



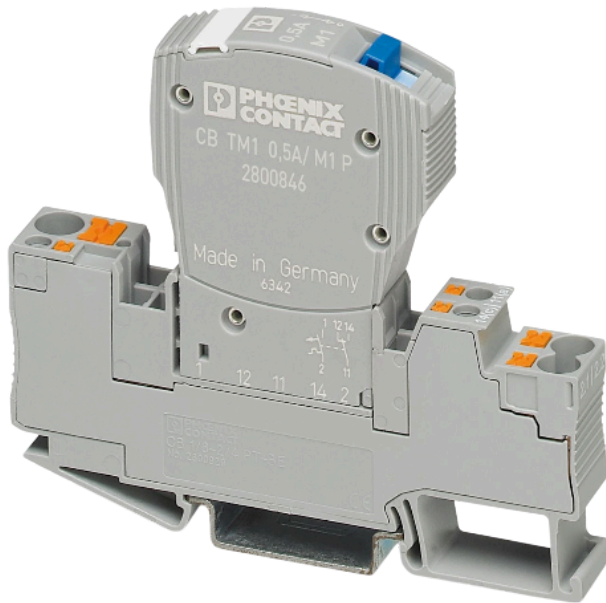
64 - 0801360

THERMOMARK INK RIBBON 110-TC | 0801371
THERMOMARK INK RIBBON 110-WMSU | 0801358
THERMOMARK INK RIBBON 64-WMSU | 0801360

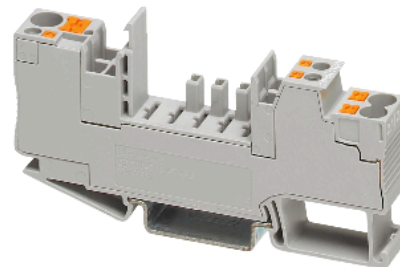


**BUNDLE
DEALS**

Thermal-magnetic device
circuit breaker



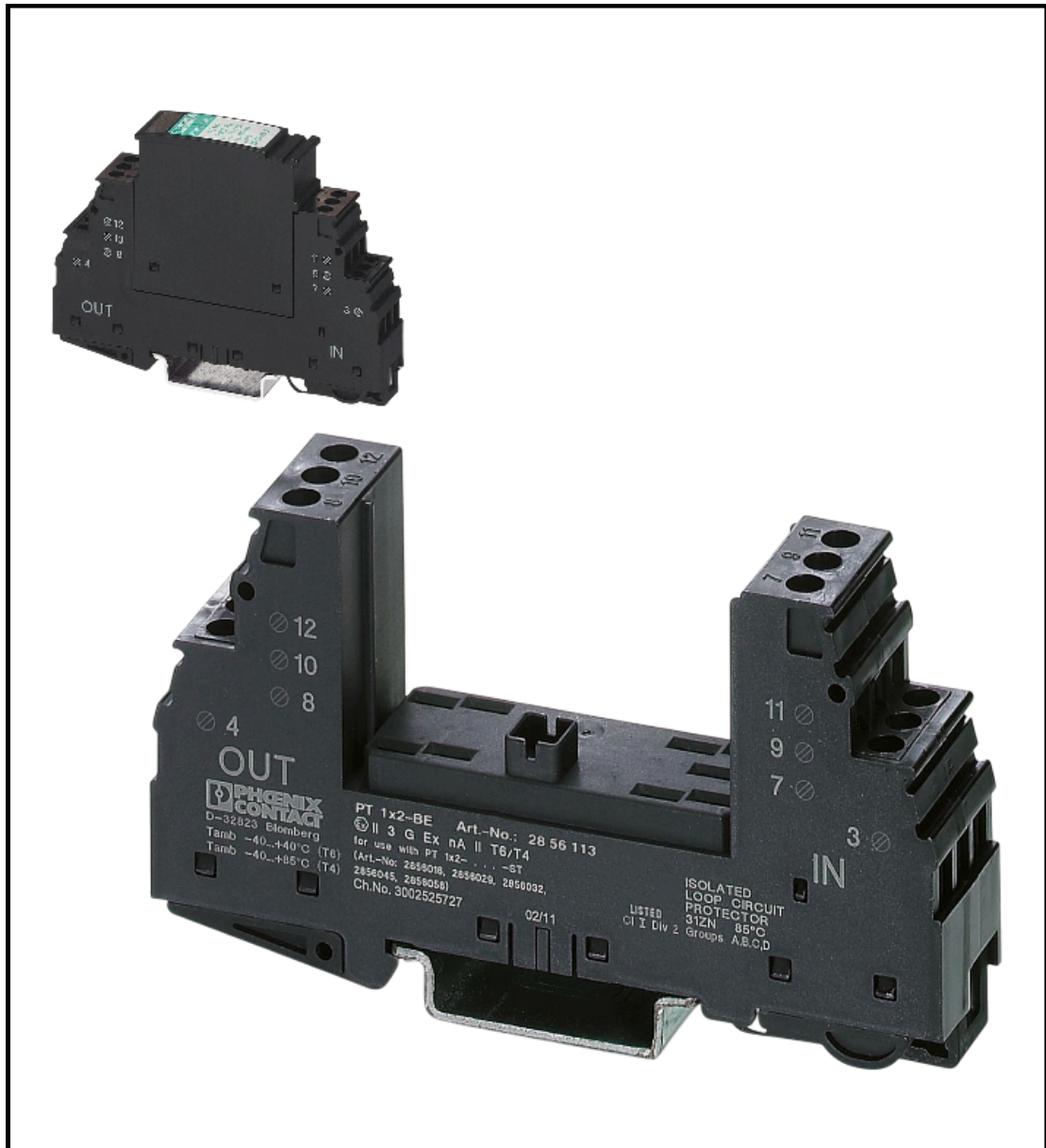
1 LOT CB Thermal-
magnetic device
circuit breaker with
base element



Base element

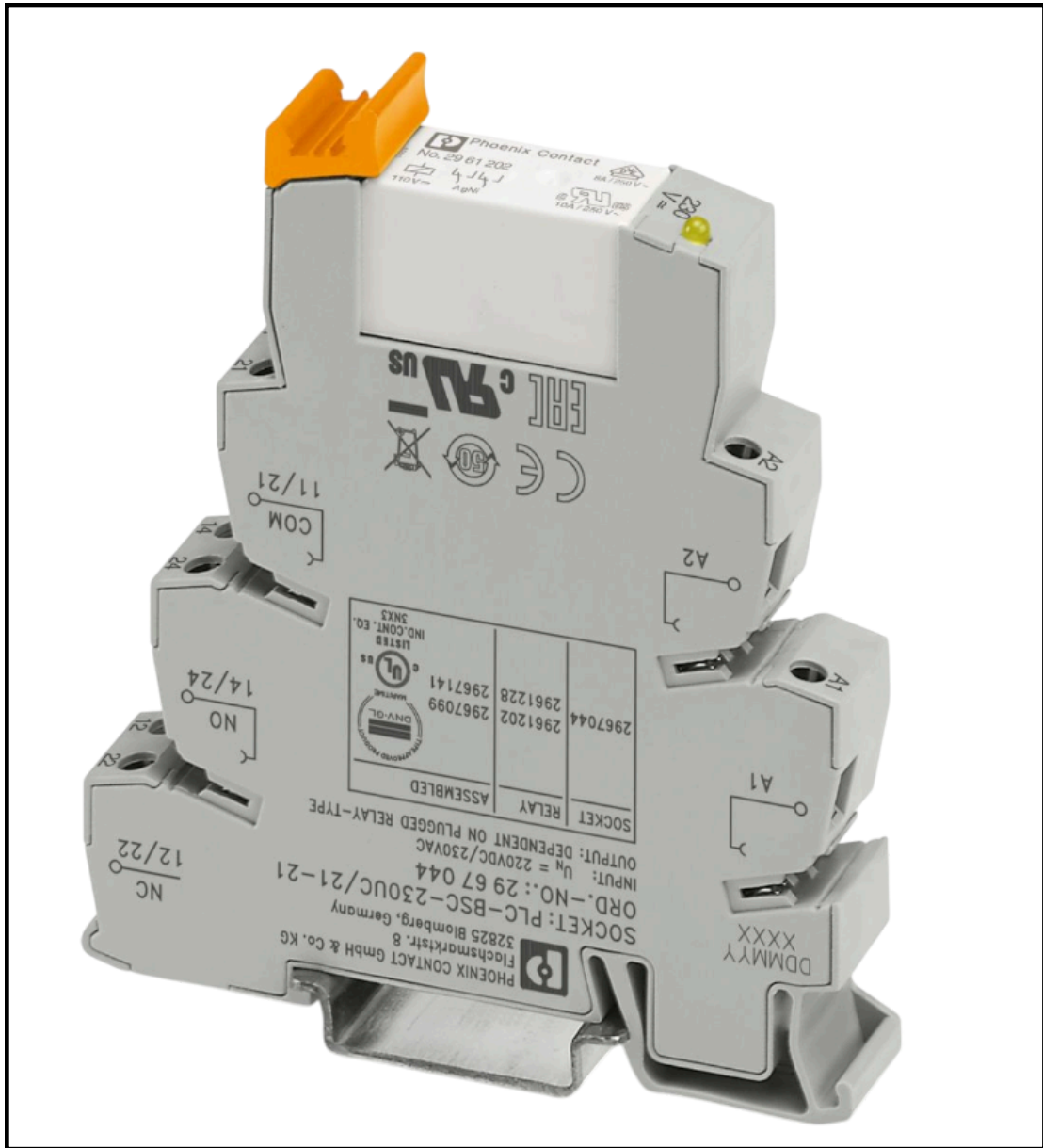
**1 LOT CB TM1 4A M1 P -
THERMAL-MAGNETIC DEVICE
CIRCUIT BREAKER WITH CB 1/6-2/4
PT-BE - BASE ELEMENT
2800850 | 2800929**





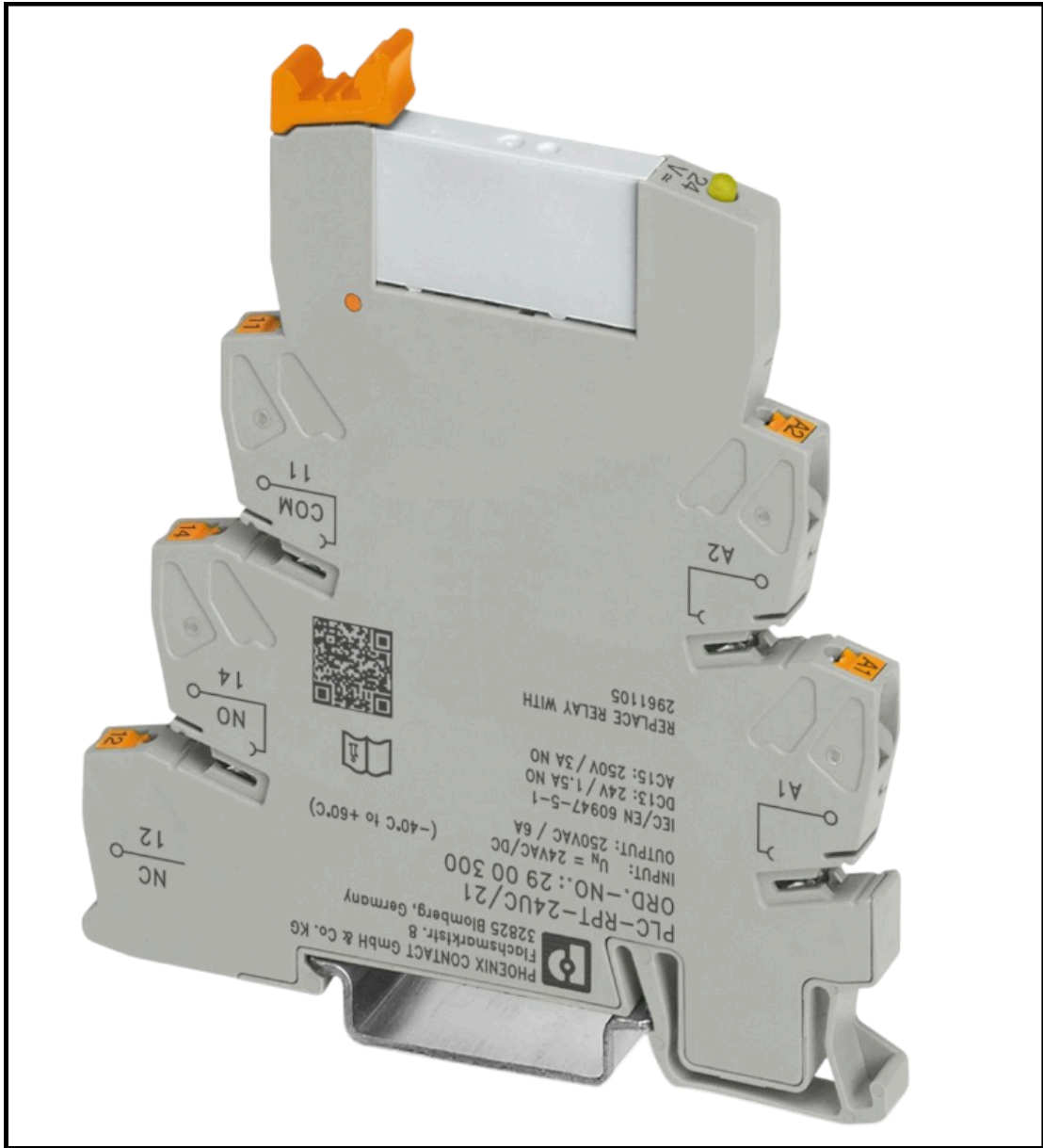
SURGE PROTECTION BASE-ELEMENT PT 1X2-BE | 2856113





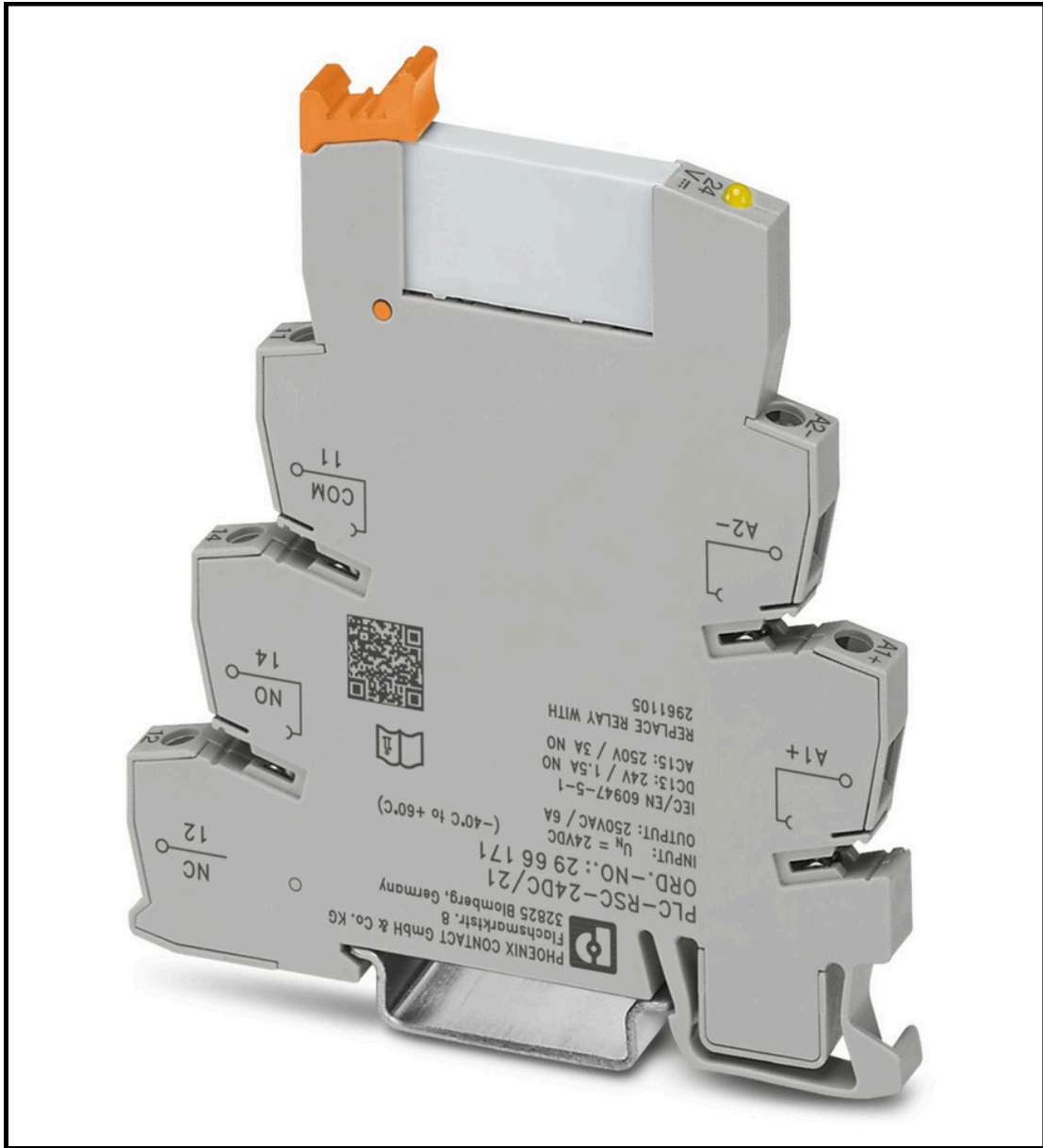
PLC-RSC-230UC/21-21 RELAY MODULE | 2967099





PLC-RPT- 24UC/21 RELAY MODULE | 2900300





PLC-RSC- 24DC/21 RELAY MODULE | 2966171





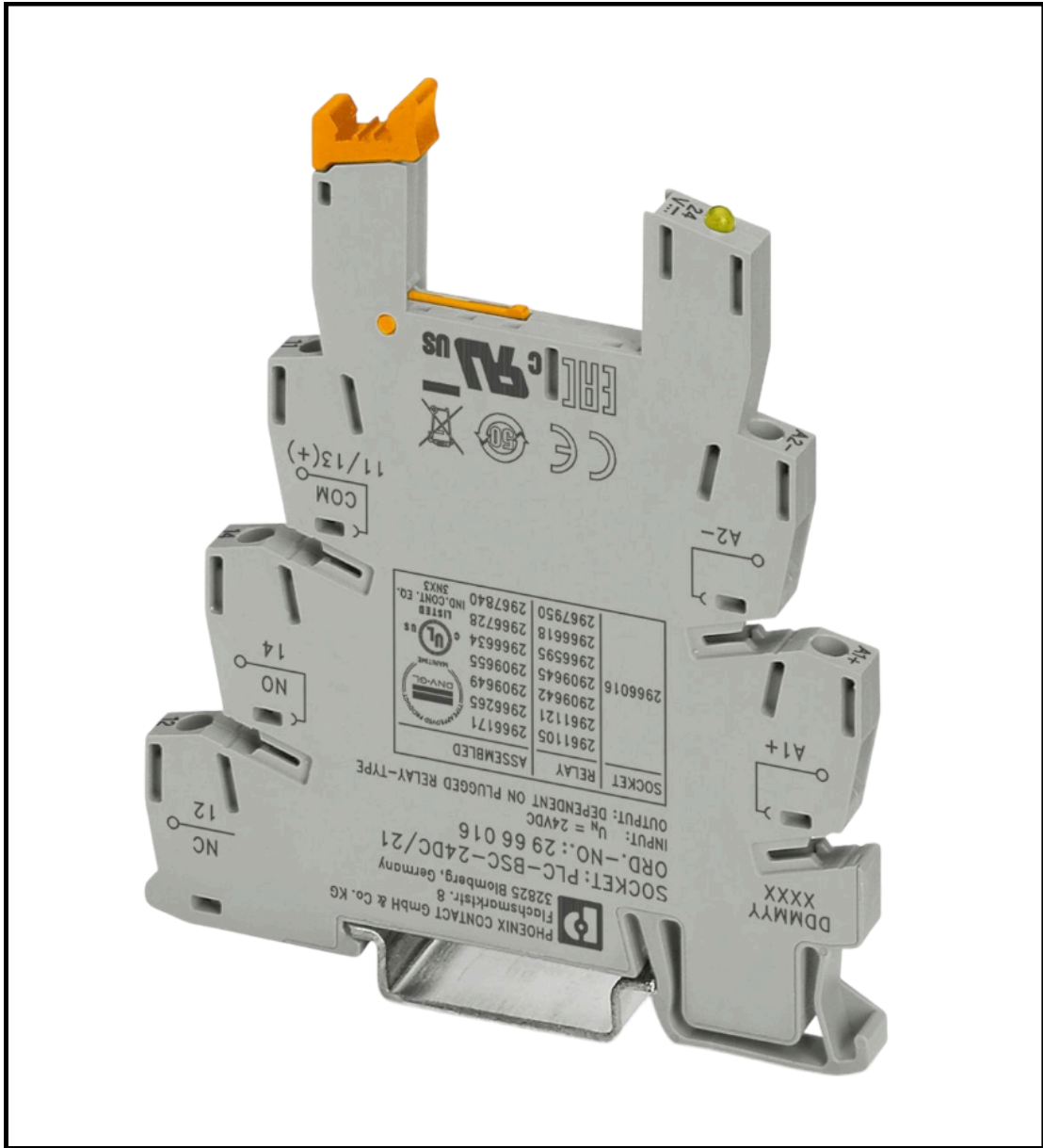
RIF-0-RPT-24DC/21
RELAY MODULE | 2903370





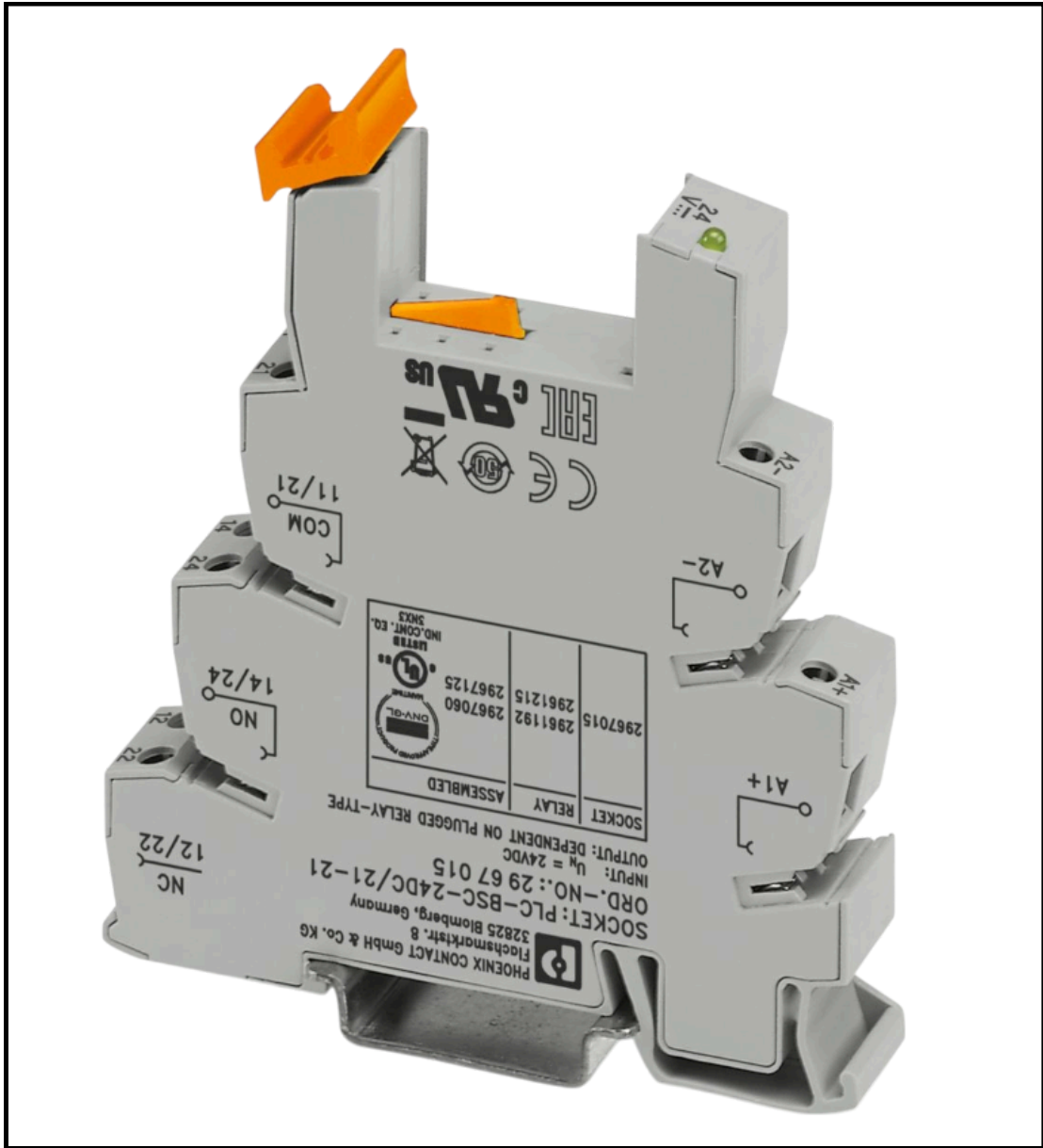
**RIF-2-RPT-LDP-24DC/2X21
RELAY MODULE | 2903315**





PLC-BSC- 24DC/21 RELAY BASE | 2966016





PLC-BSC- 24DC/21-21 RELAY BASE | 2967015



**BUNDLE
DEALS**

**SINGLE RELAY
WITH BASE**

Single Relay | 2903677



Relay base
2900934

**1 LOT SINGLE RELAY REL-IR4/LDP-
24DC/4X21 | 2903677 WITH RIF-2-
BPT/4X21 - RELAY BASE | 2900934**



**SINGLE RELAY
WITH BASE**

Single relay | 2903684



Relay base
2900934

**1 LOT REL-IR4/L-120AC/4X21AU
SINGLE RELAY | 2903684 WITH RIF-2-
BPT/4X21 RELAY BASE | 2900934**



**BUNDLE
DEALS**

**SINGLE RELAY
WITH BASE**

Single Relay| 2903660



Relay base
2900934

**1 LOT SINGLE RELAY REL-IR2/LDP-
24DC/2X21 | 2903660 WITH RIF-2-
BPT/4X21 - RELAY BASE | 2900934**





**SINGLE RELAY
WITH BASE**

Single Relay | 2903664

Relay base
2900934

**1 LOT SINGLE RELAY REL-
IR2/LDP-125DC/2X21 | 2903664
WITH RIF-2-BPT/4X21 - RELAY
BASE | 2900934**



**BUNDLE
DEALS**

**SINGLE RELAY
WITH BASE**

Single Relay | 2903668



Relay base
2900934



**1 LOT SINGLE RELAY REL-IR2/L-
230AC/2X21 | 2903668 WITH RIF-2-
BPT/4X21 - RELAY BASE | 2900934**



**BUNDLE
DEALS**

**SINGLE RELAY
WITH BASE**

Single Relay | 2903688

Relay base
2900934

**1 LOT SINGLE RELAY REL-IR4/L-
230AC/4X21 | 2903688 WITH RIF-2-
BPT/4X21 - RELAY BASE | 2900934**



**BUNDLE
DEALS**

**SINGLE RELAY
WITH BASE**

Single Relay | 2903678



Relay base
2900934

**1 LOT SINGLE RELAY REL-IR4/LDP-
48DC/4X21 | 2903678 WITH RIF-2-
BPT/4X21 - RELAY BASE | 2900934**



**BUNDLE
DEALS**

**SINGLE RELAY
WITH BASE**

Single Relay| 2903661



Relay base
2900934

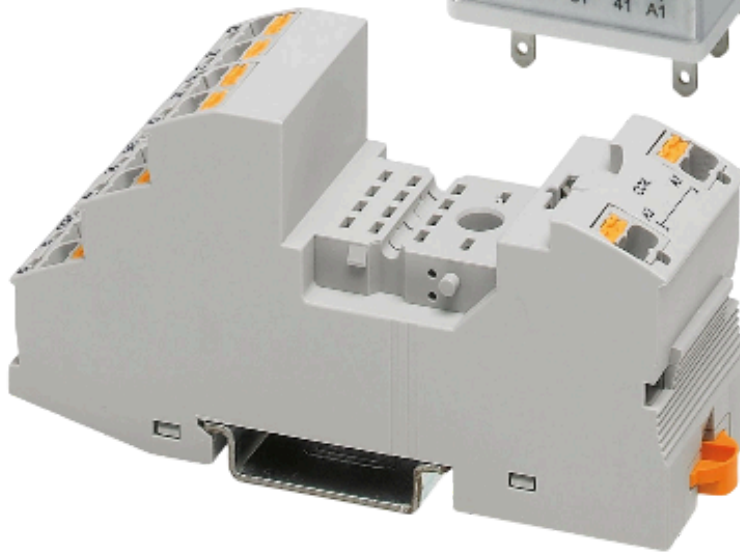
**1 LOT SINGLE RELAY REL-IR2/LDP-
48DC/2X21 | 2903661 WITH RIF-2-
BPT/4X21 - RELAY BASE | 2900934**



**BUNDLE
DEALS**

**SINGLE RELAY
WITH BASE**

Single Relay | 2903674



Relay base
2900934

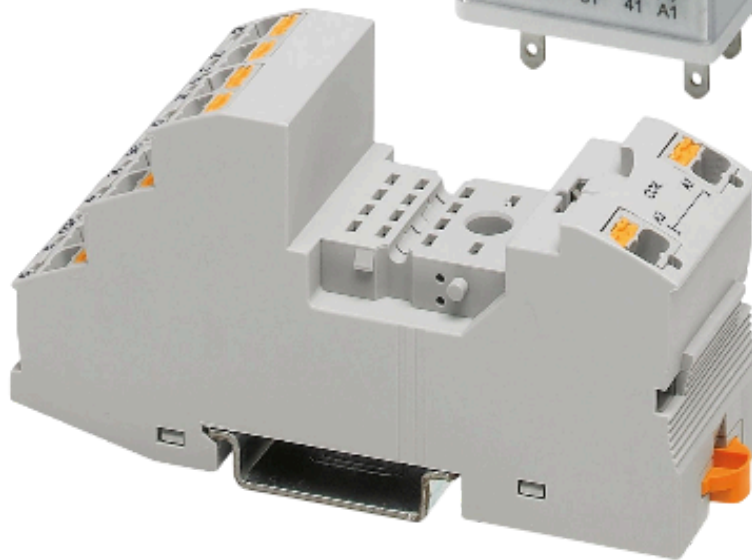
**1 LOT SINGLE RELAY REL-IR4/ LDP-
125DC/4X21AU | 2903674 WITH RIF-2-
BPT/4X21 - RELAY BASE | 2900934**



**BUNDLE
DEALS**

**SINGLE RELAY
WITH BASE**

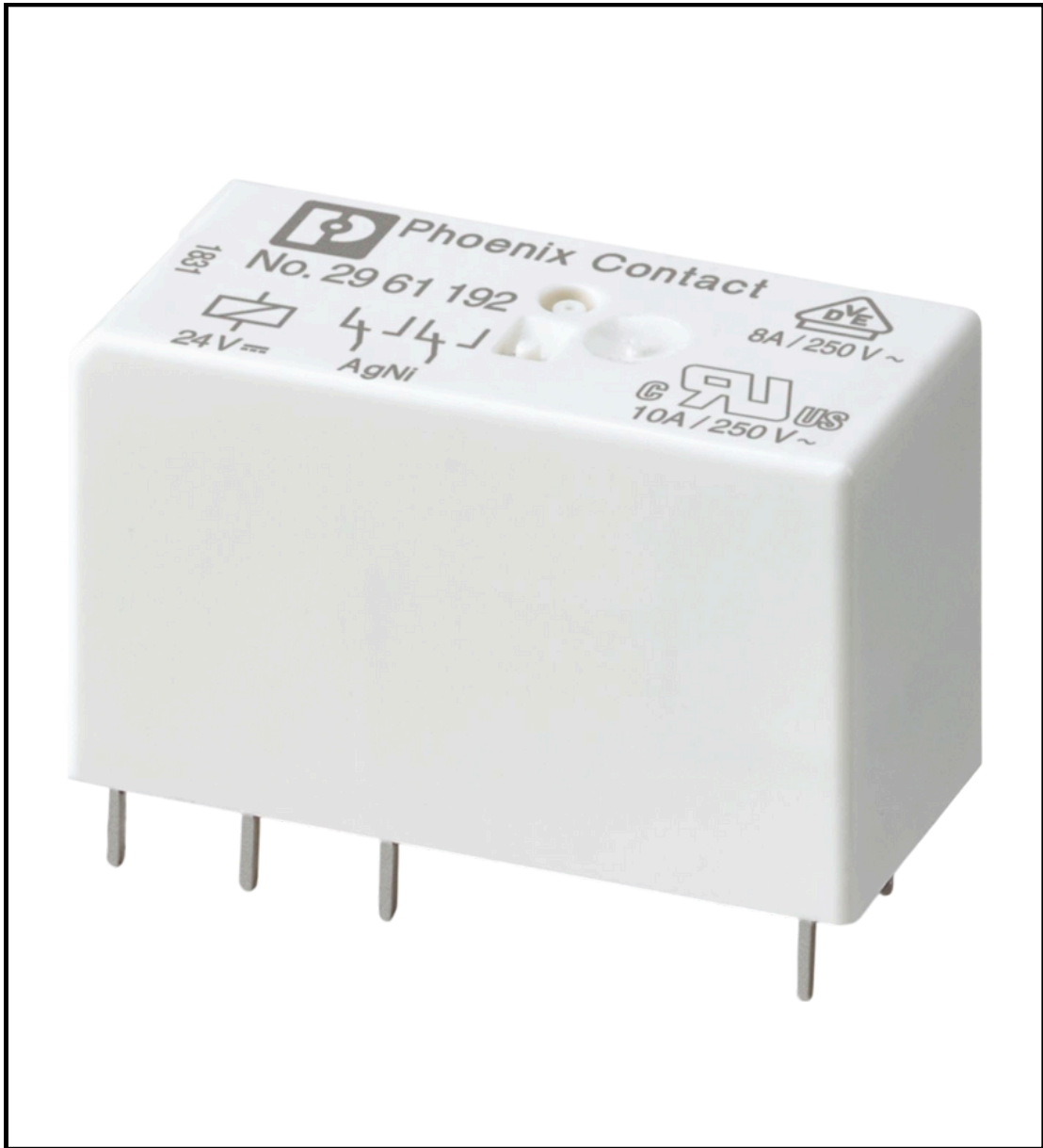
Single Relay| 2903681



Relay base
2900934

**1 LOT SINGLE RELAY REL-IR4/LDP-
125DC/4X21 | 2903681 WITH RIF-2-
BPT/4X21 - RELAY BASE | 2900934**





**REL-MR- 24DC/21-21
SINGLE RELAY | 2961192**





**REL-MR- 24DC/21
SINGLE RELAY | 2961105**





REL-PR3-125DC/3X21 SINGLE RELAY | 2909056





REL-PR2-120AC/2X21
SINGLE RELAY | 2903700





**REL-IR4/LDP-110DC/4X21
SINGLE RELAY | 2903680**





**REL-IR4/L-120AC/4X21
SINGLE RELAY | 2903687**





**REL-IR-BL/L-110DC/4X21
SINGLE RELAY | 1109560**





**REL-IR-BL- 24DC/4X21
SINGLE RELAY | 1032521**





**REL-IR-BL/L- 24DC/2X21
SINGLE RELAY | 1032526**





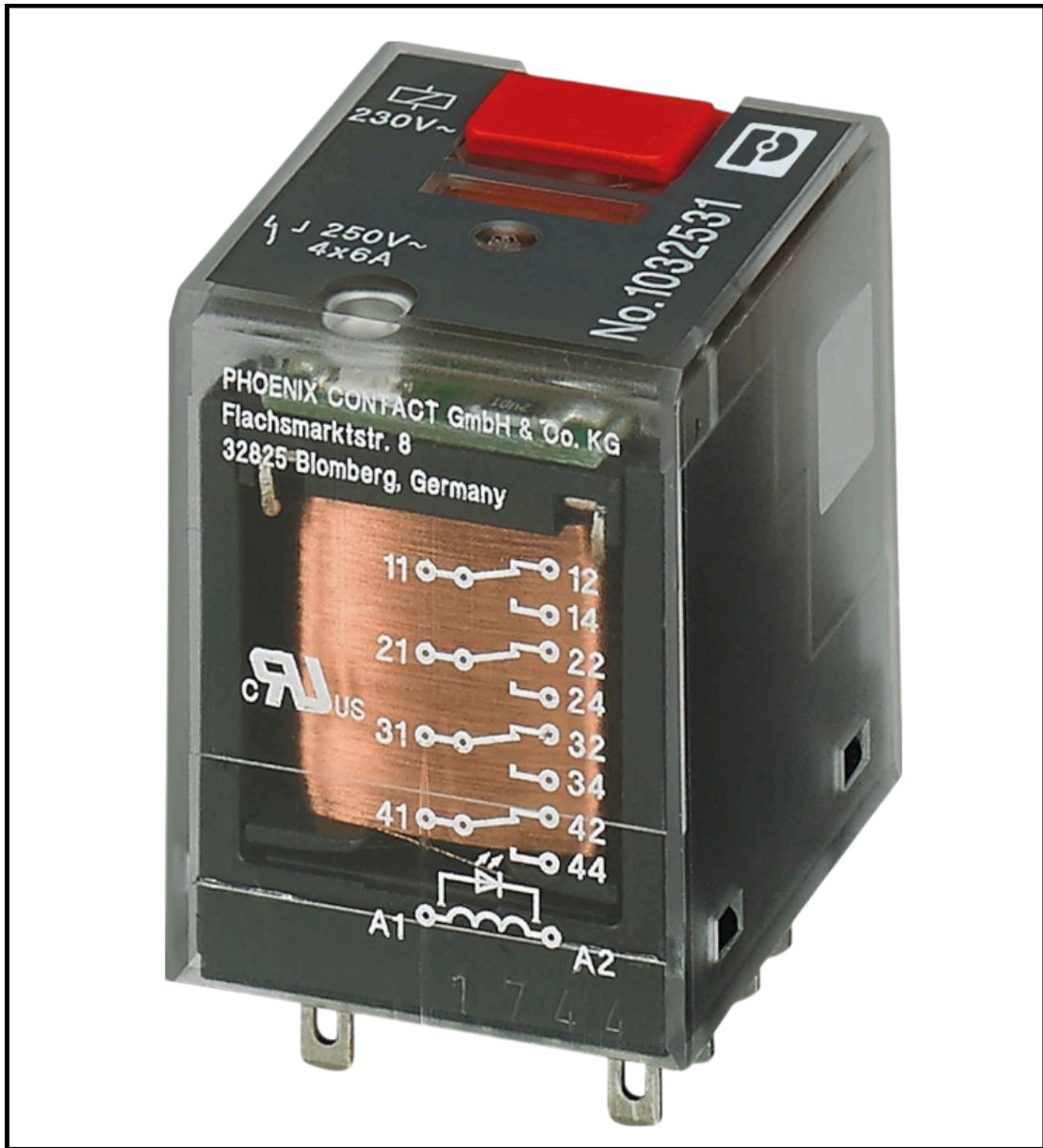
**REL-IR-BL/L-230AC/2X21
SINGLE RELAY | 1032530**





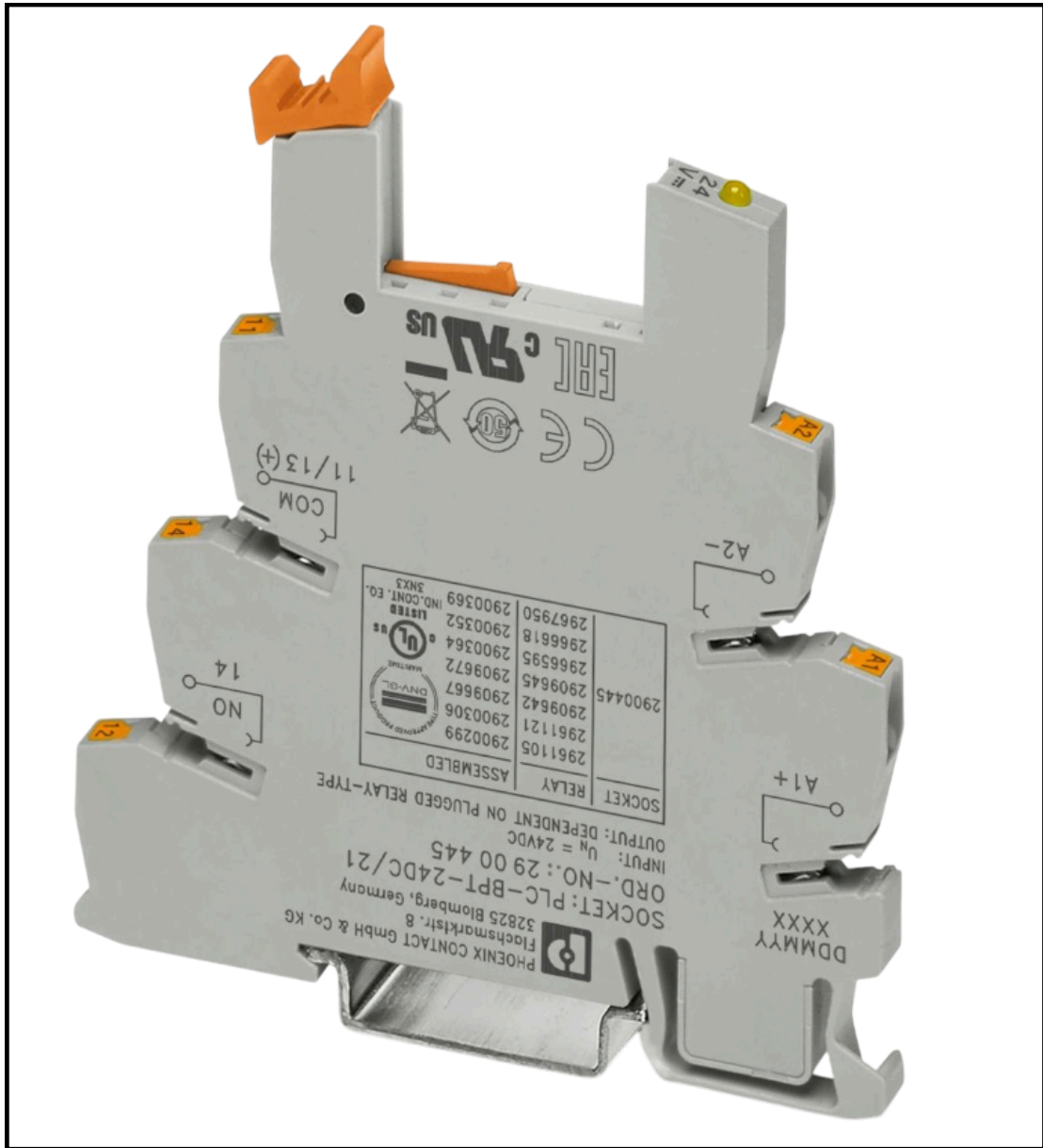
**REL-IR-BL/L- 24AC/4X21
SINGLE RELAY | 1109563**





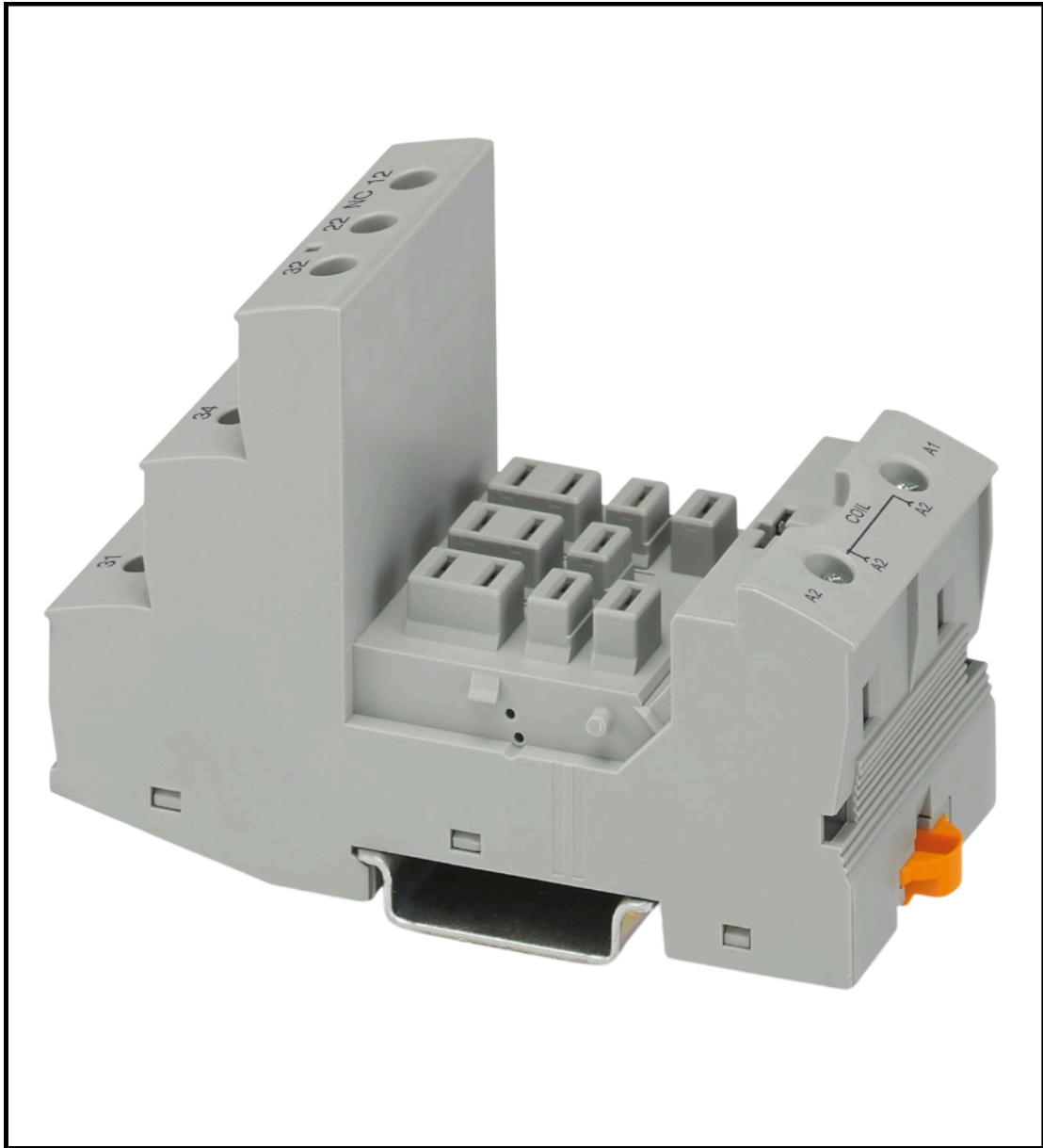
REL-IR-BL/L-230AC/4X21
SINGLE RELAY | 1032531





PLC-BPT- 24DC/21 RELAY BASE | 2900445





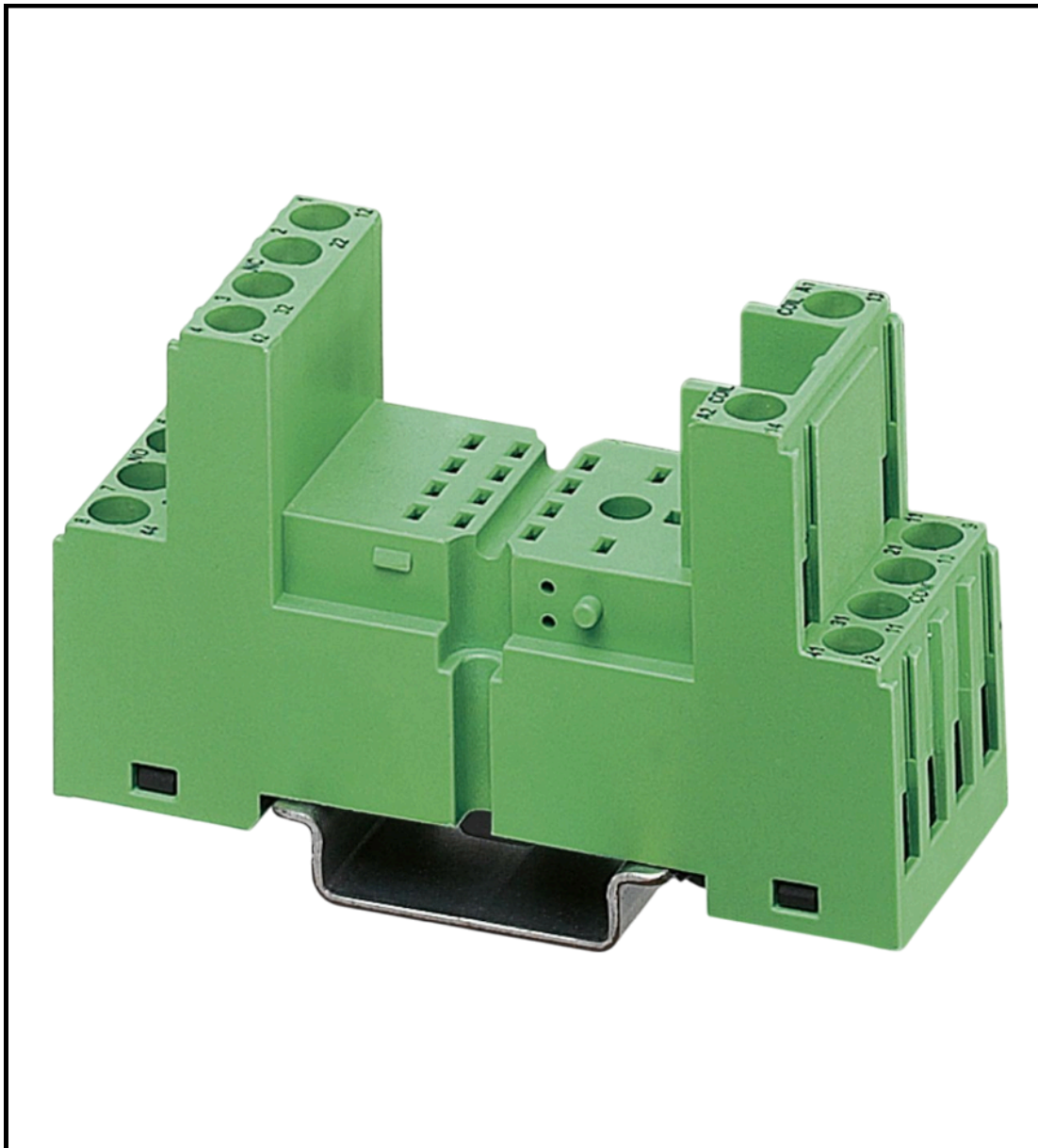
RIF-4-BSC/3X21
RELAY BASE | 2900960





RIF-2-BSC/4X21
RELAY BASE | 2900932





PR2-BSC2/4X21
RELAY BASE | 2833563





**ECOR-2-BSC2-RT/4X21
RELAY BASE | 2908214**

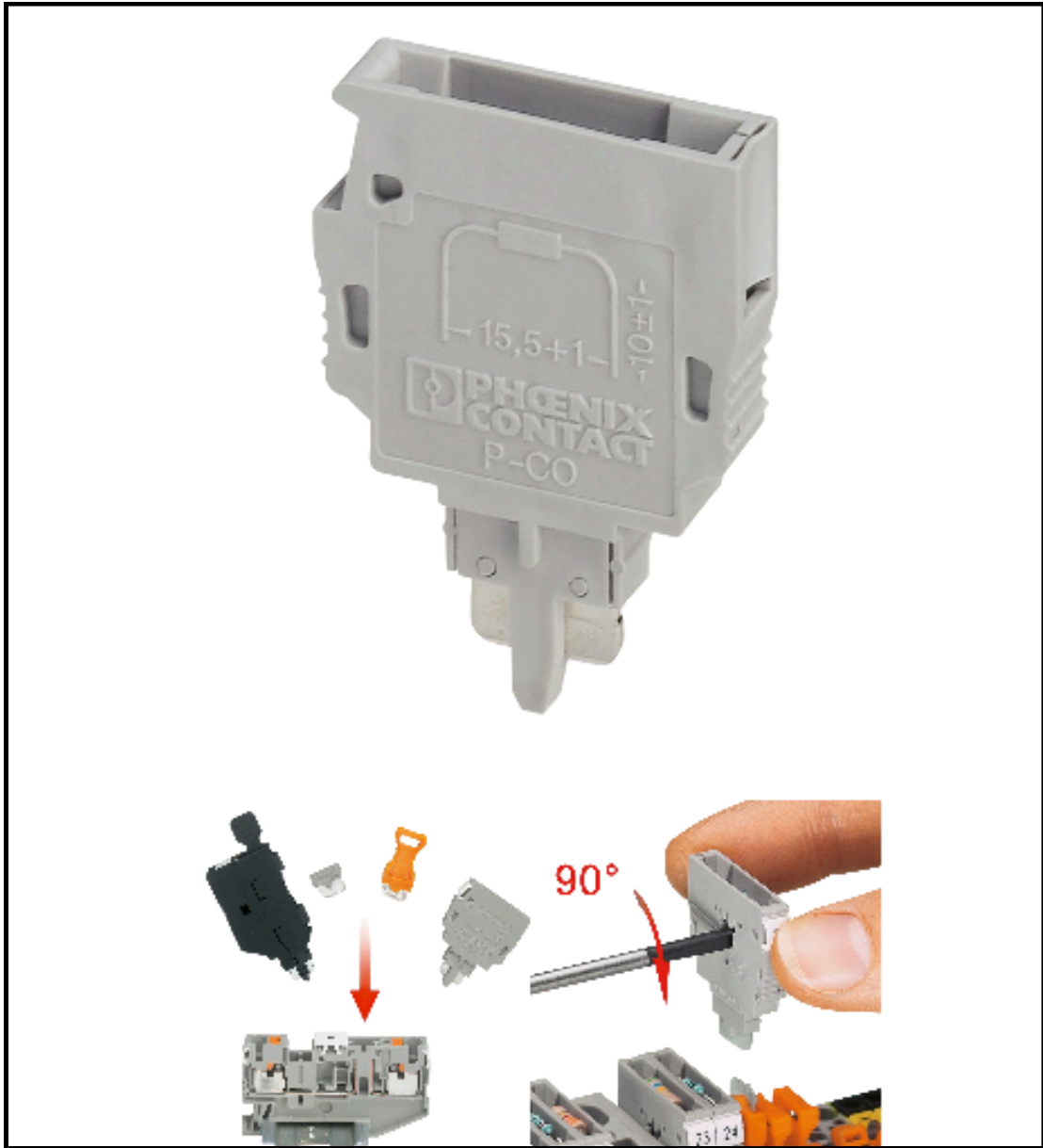




FOR MOUNTING
ON NS 35/7,5

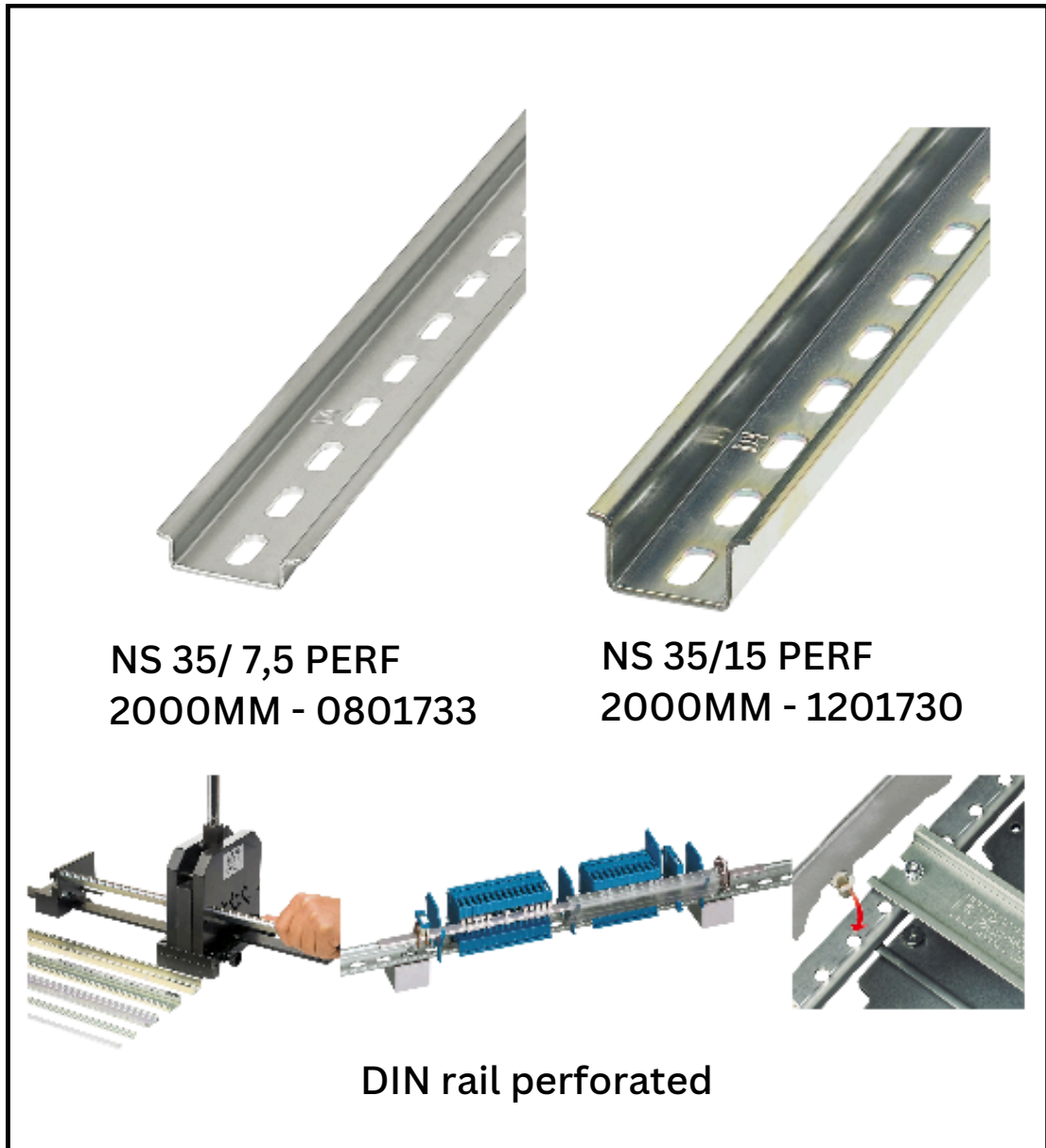
ECOR-2-BSC2-RT/2X21 RELAY BASE | 2908341





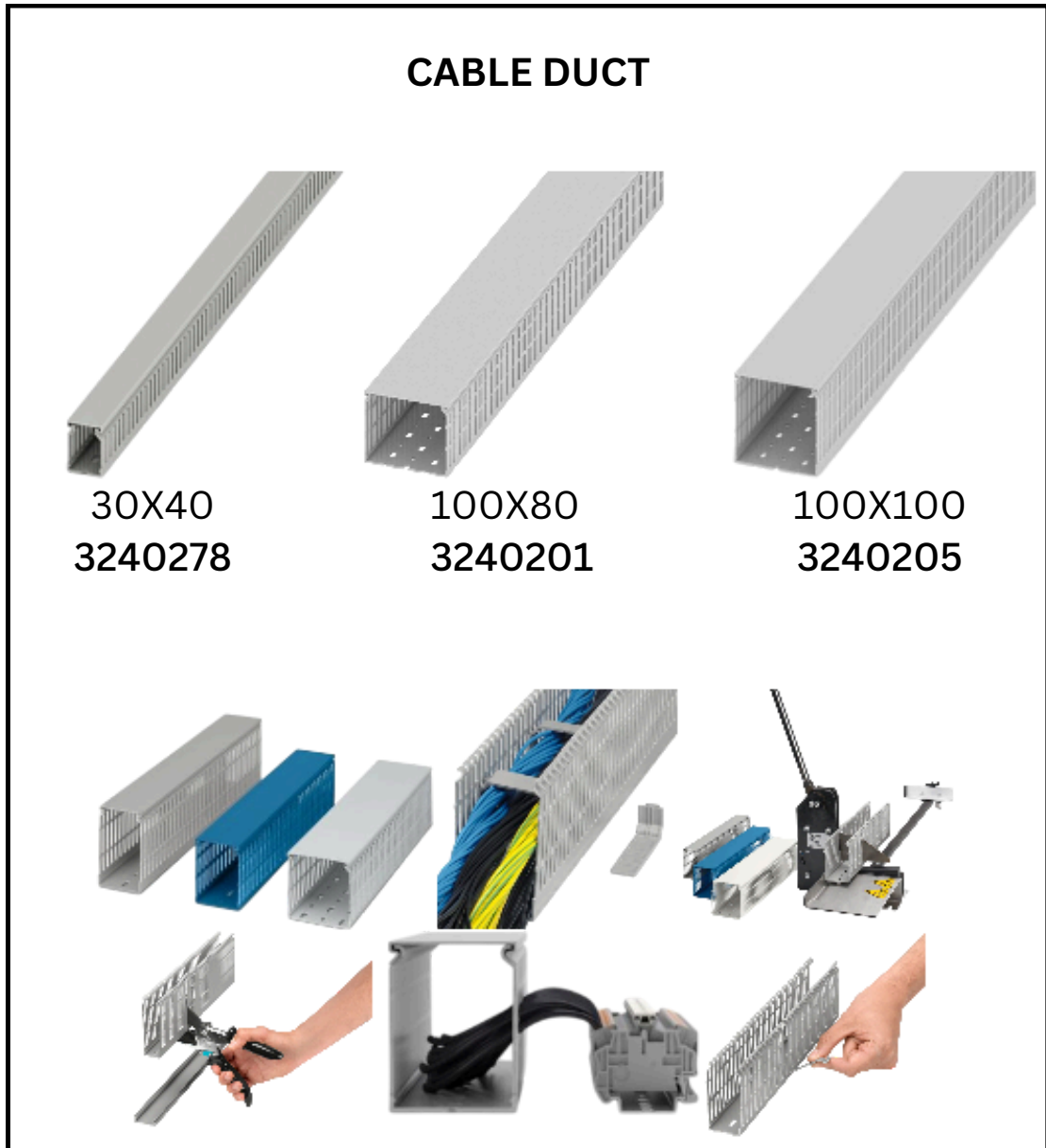
P-CO | 3036796
COMPONENT CONNECTOR





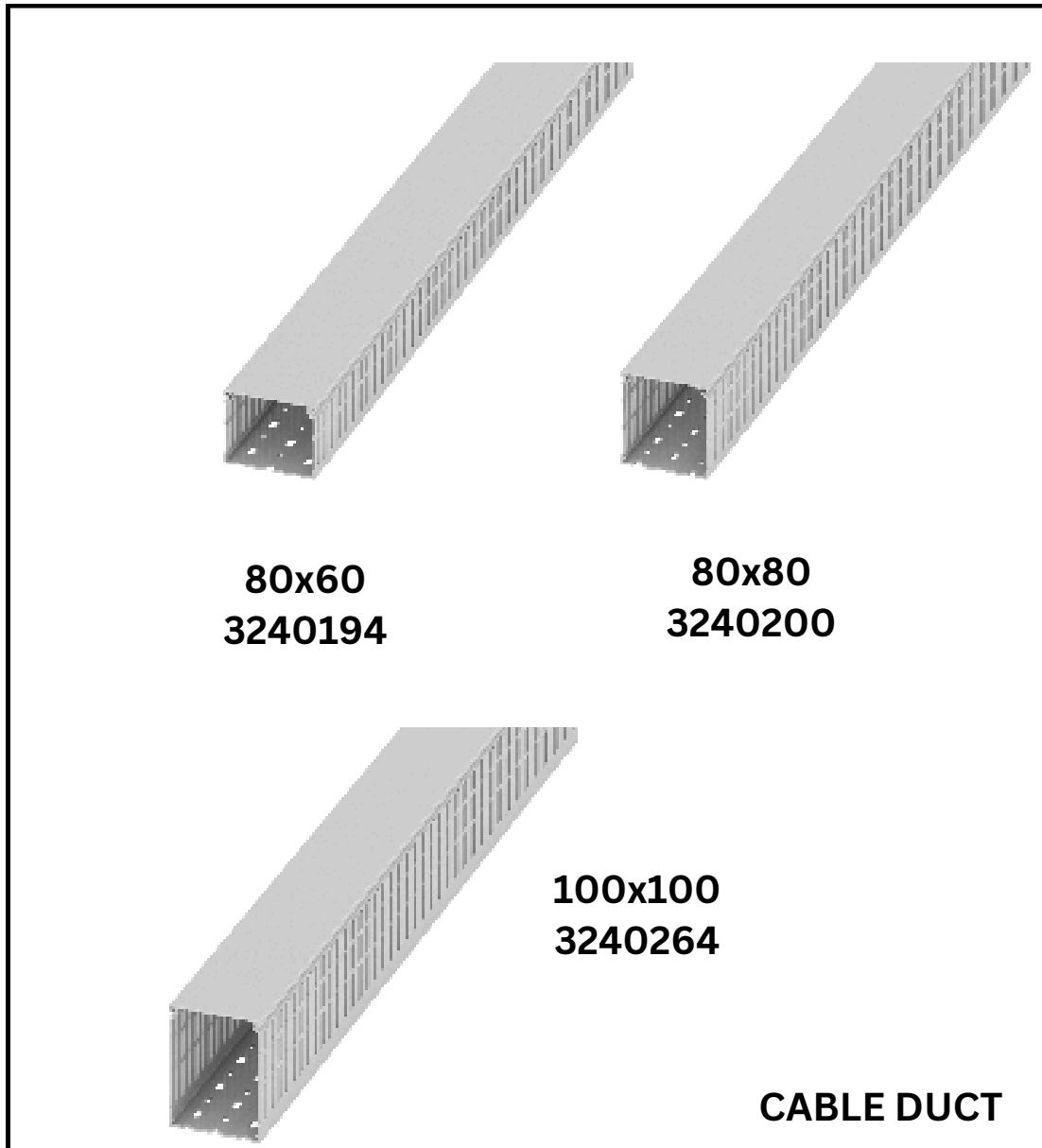
**NS 35/ 7,5 PERF 2000MM
DIN RAIL PERFORATED | 0801733
NS 35/15 PERF 2000MM
DIN RAIL PERFORATED | 1201730**





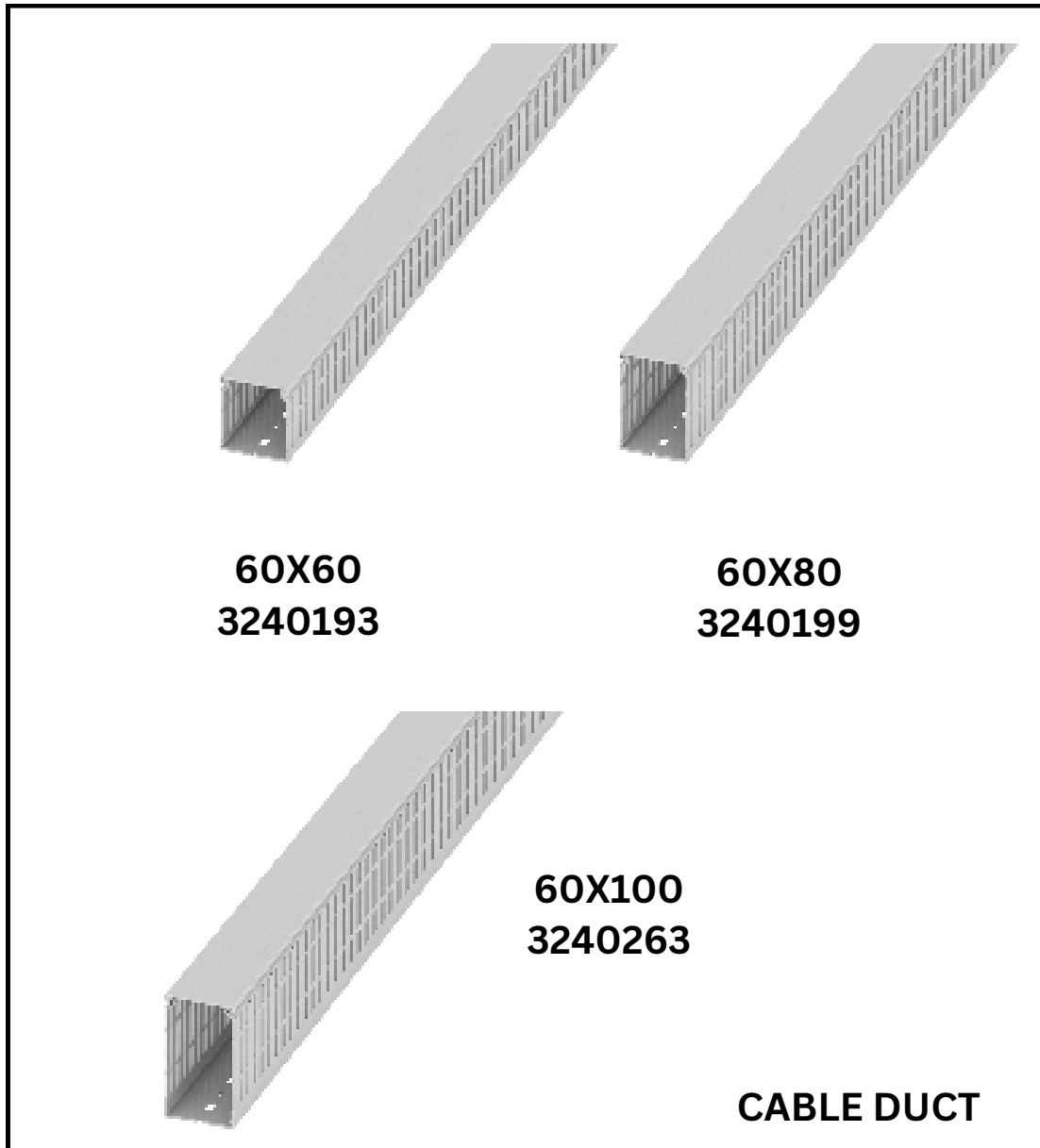
CD 100X100 CABLE DUCT | 3240205
CD 100X80 CABLE DUCT | 3240201
CD 30X40 CABLE DUCT | 3240278





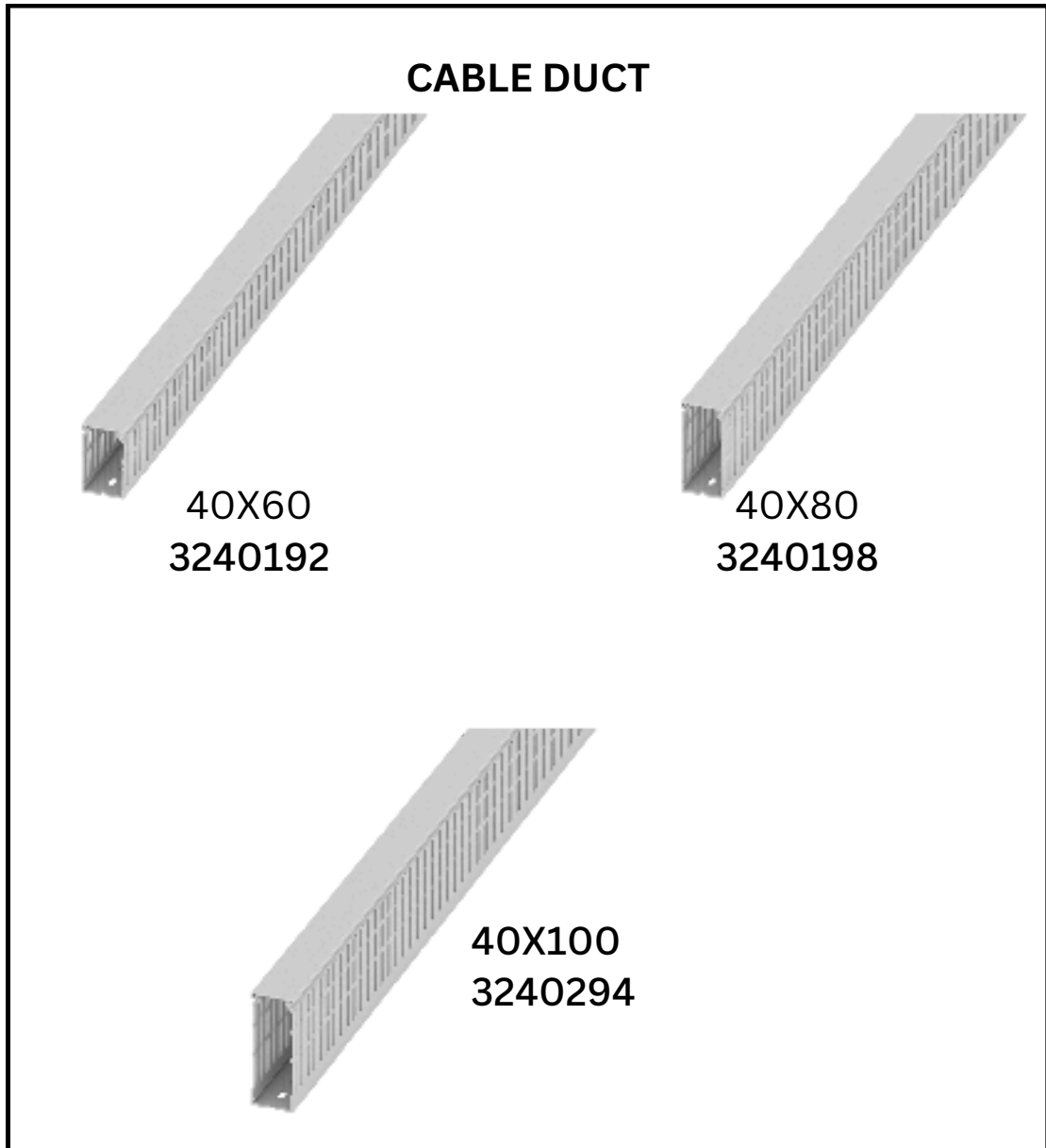
CD 80X60 CABLE DUCT | 3240194
CD 80X80 CABLE DUCT | 3240200
CD 100X100 CABLE DUCT | 3240264





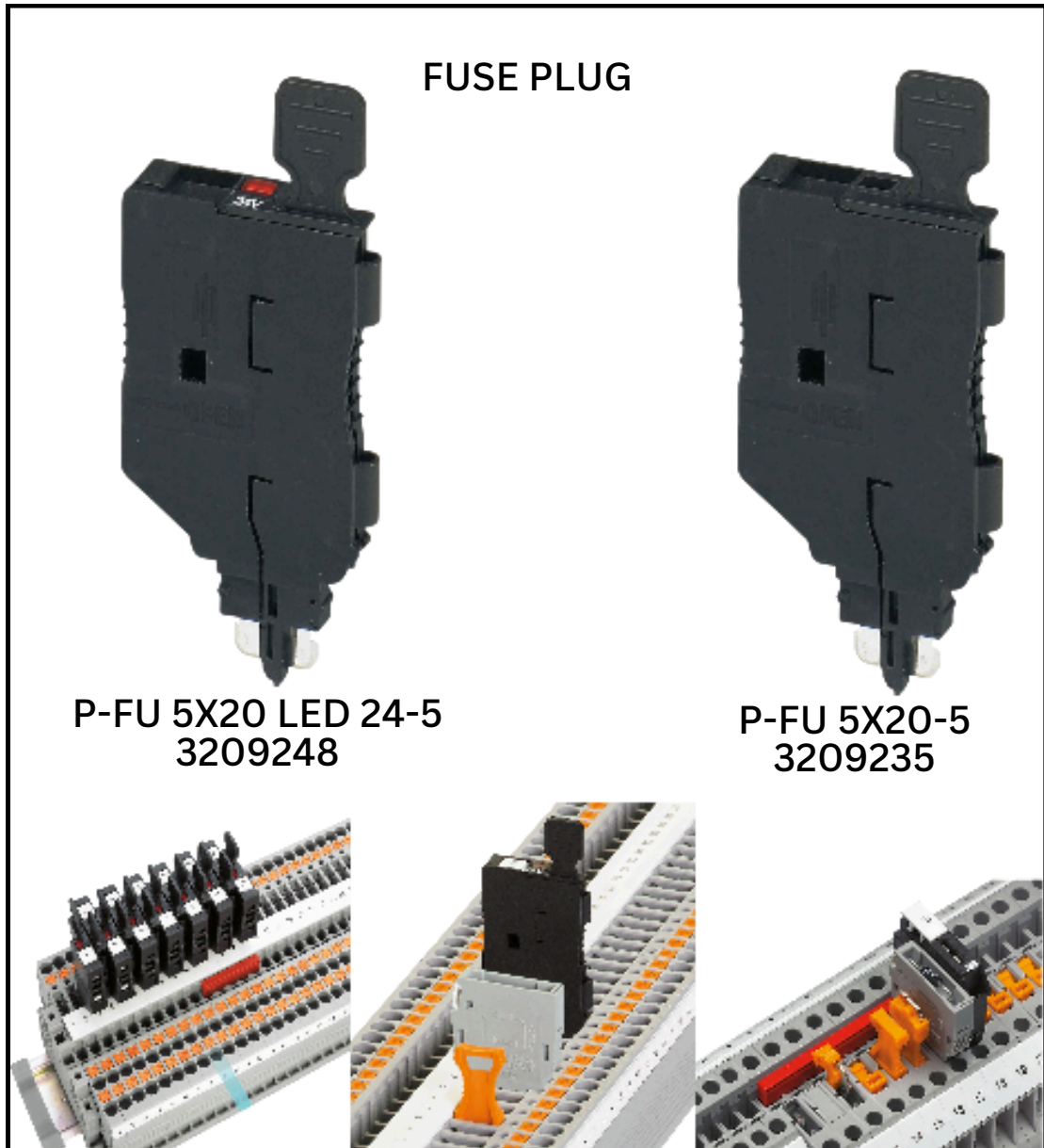
CD 60X60 CABLE DUCT | 3240193
CD 60X80 CABLE DUCT | 3240199
CD 60X100 CABLE DUCT | 3240263





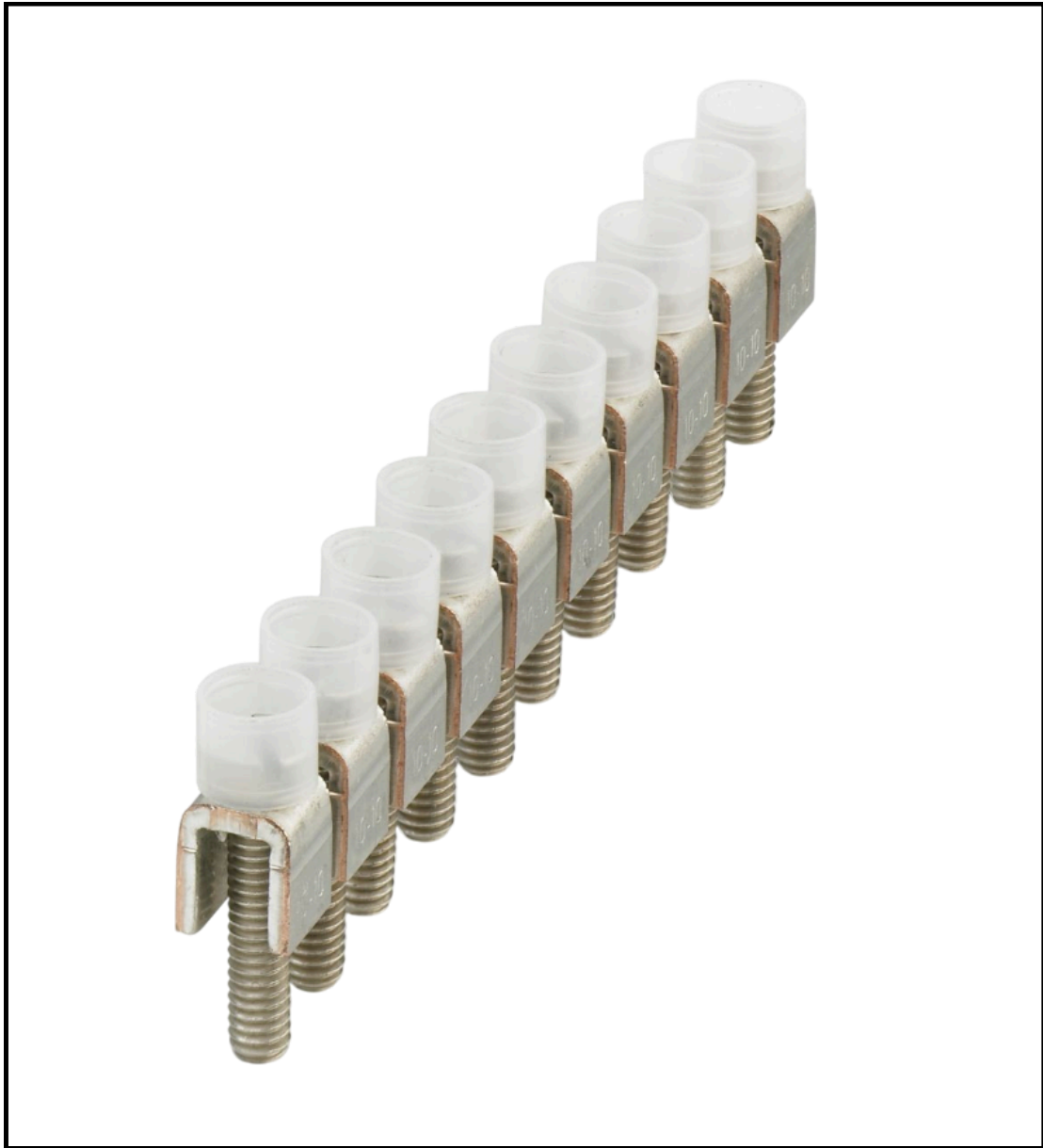
CD 40X60 CABLE DUCT | 3240192
CD 40X80 CABLE DUCT | 3240198
CD 40X100 CABLE DUCT | 3240294





P-FU 5X20 LED 24-5 FUSE PLUG | 3209248
P-FU 5X20-5 FUSE PLUG | 3209235





FBI 10-10 FIXED BRIDGE | 0203276





FBI 10- 8 FIXED BRIDGE | 0203263





FBRI 10-8 N FIXED BRIDGE | 2772080





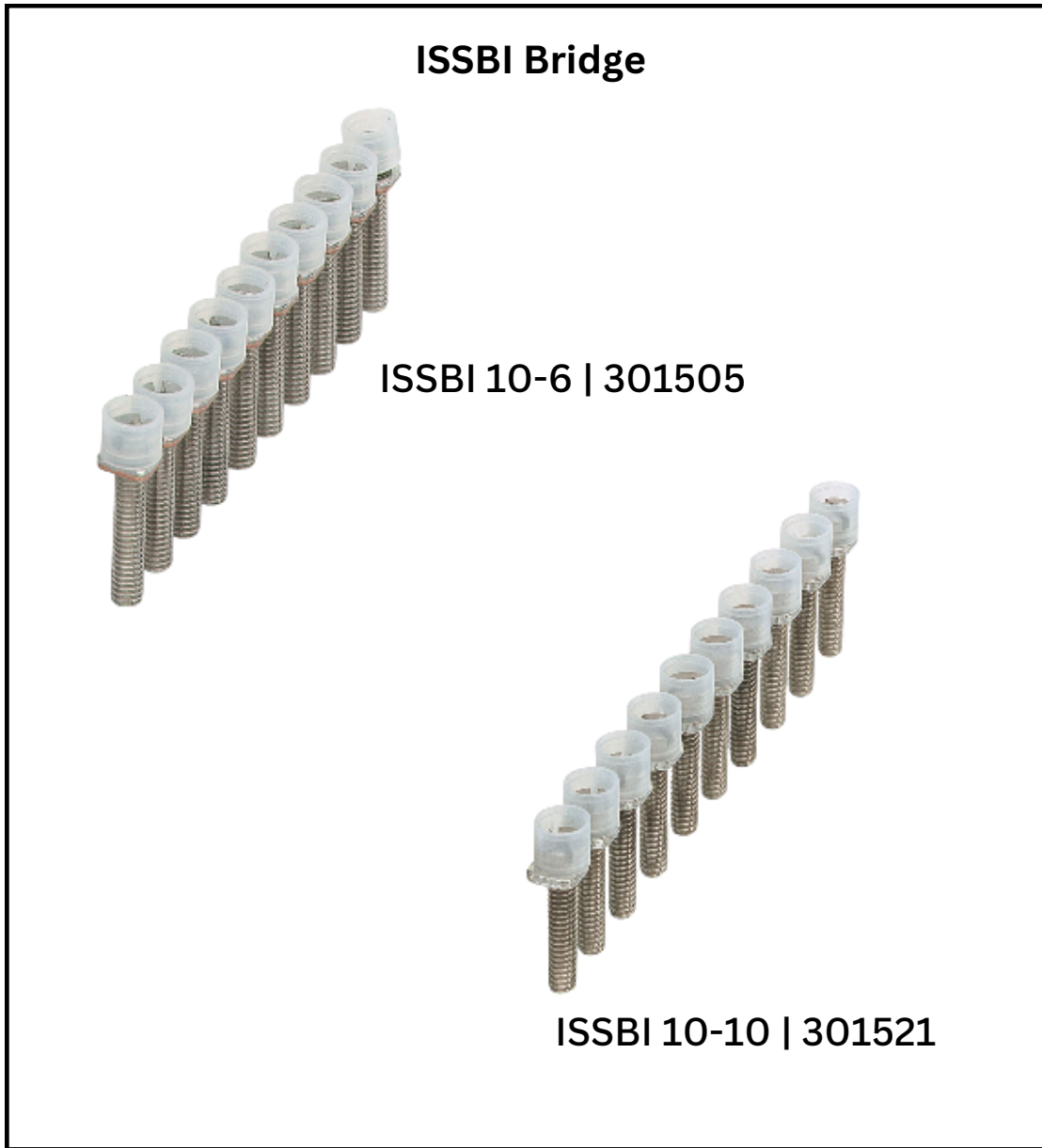
FBRI 10-5 N FIXED BRIDGE | 2770642





FBI 10- 6 FIXED BRIDGE | 0203250





ISSBI 10- 6 BRIDGE | 301505
ISSBI 10- 10 BRIDGE | 301521





SB 4-URTK/SP BRIDGE BAR | 0360025





SB 2-URTK/SP BRIDGE BAR | 0360012





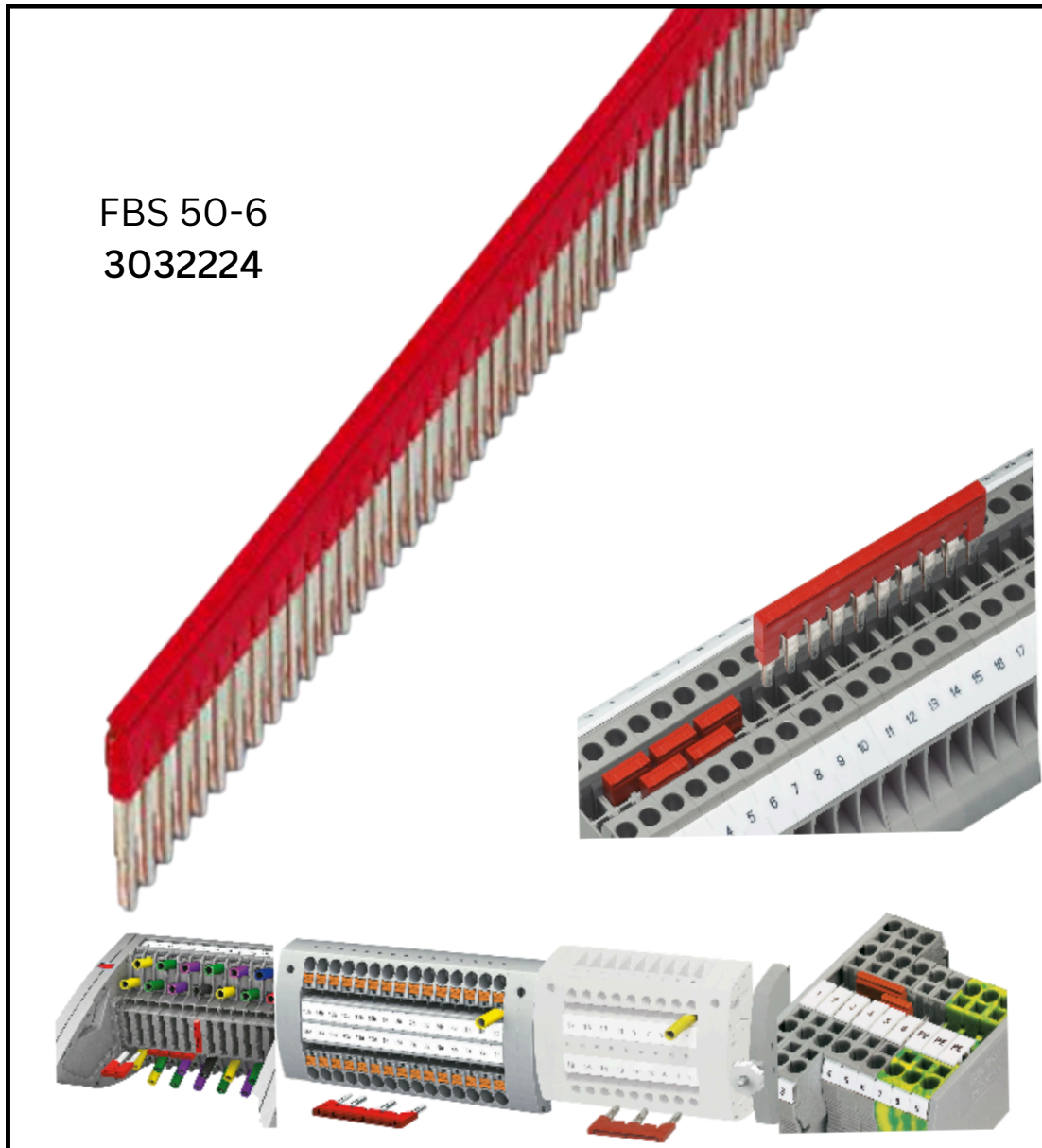
SB 4-RTK/S BRIDGE BAR | 0311265





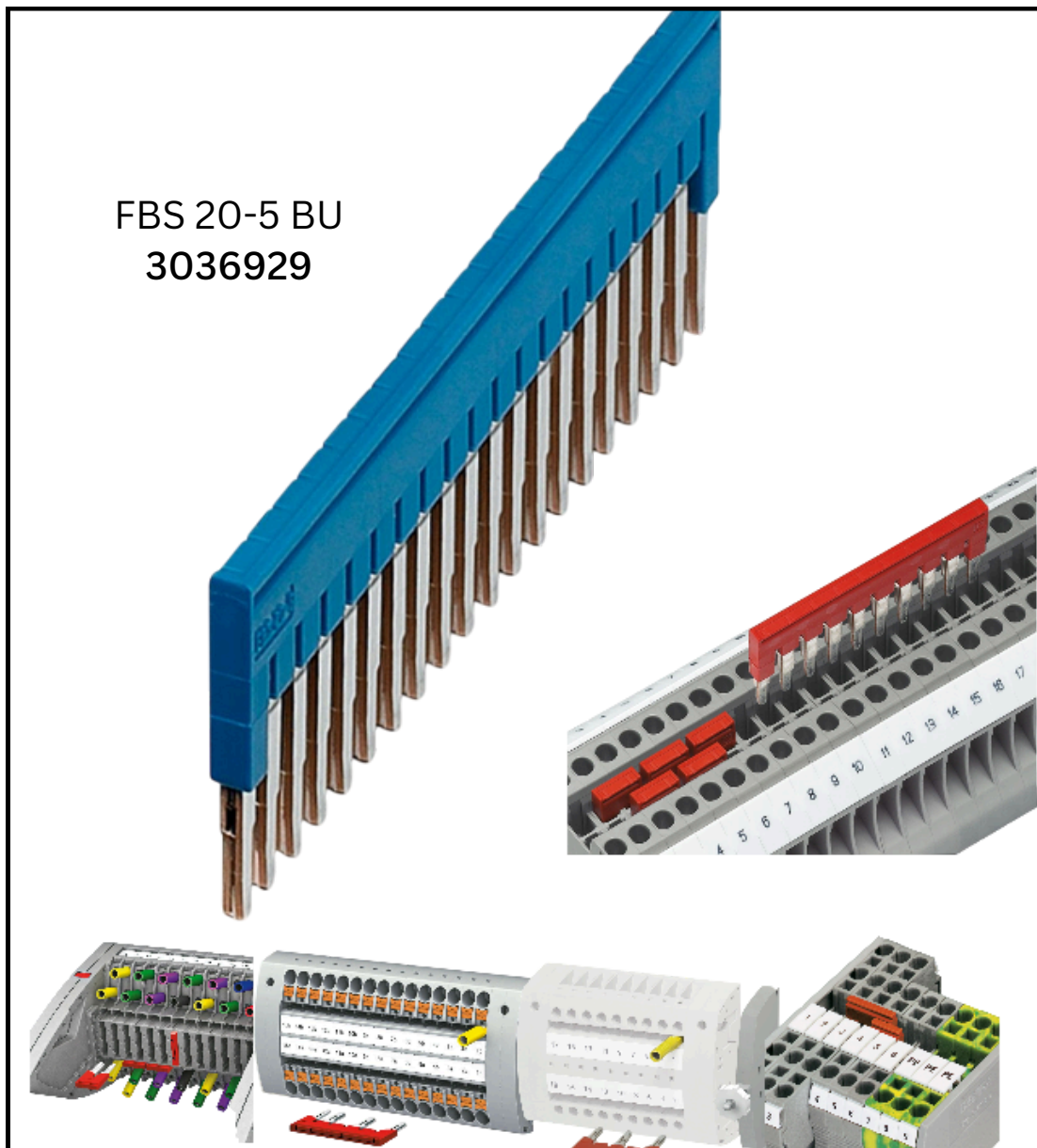
SB 2-RTK/S BRIDGE BAR | 0311236





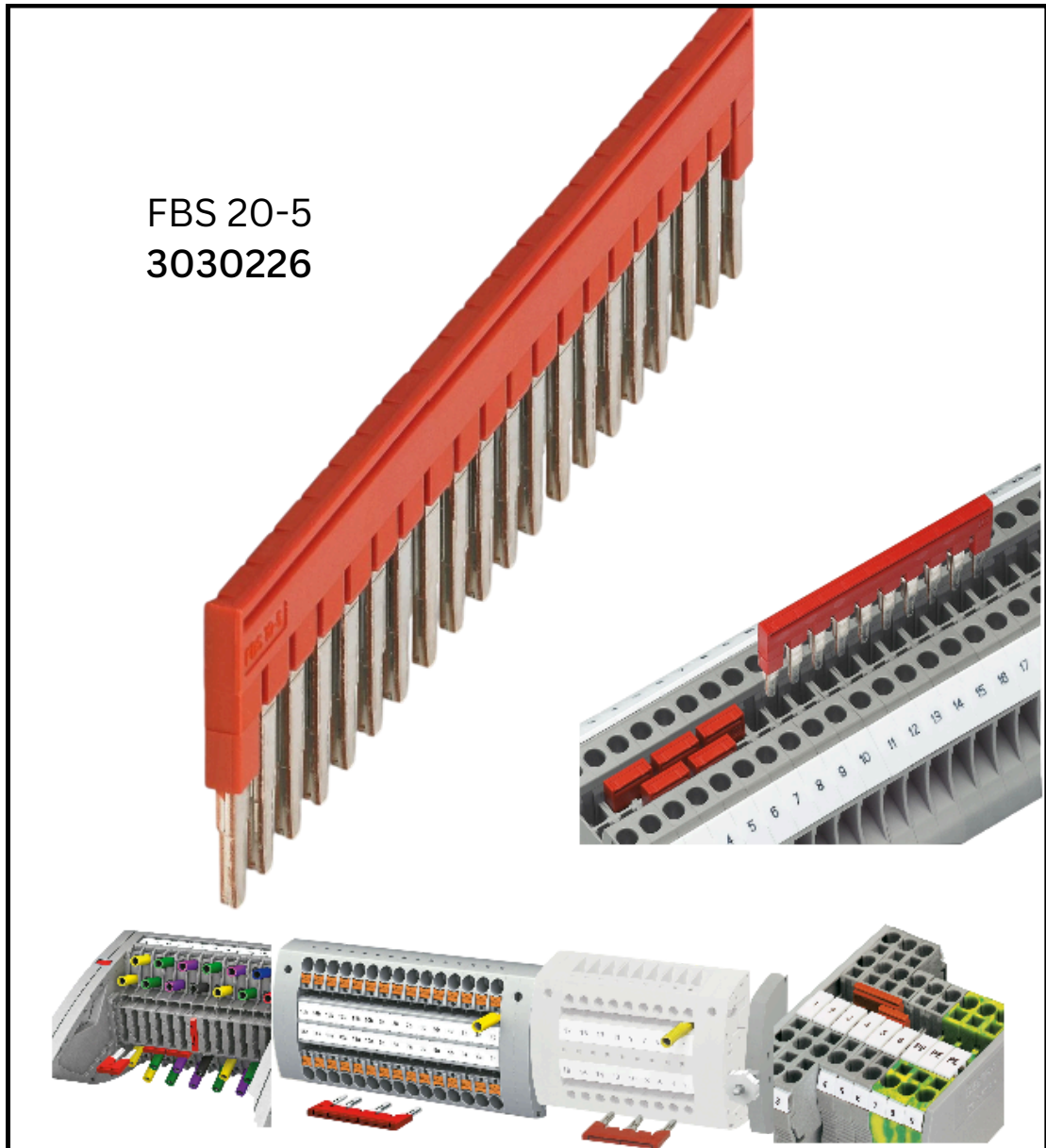
FBS 50-6 PLUG-IN BRIDGE | 3032224





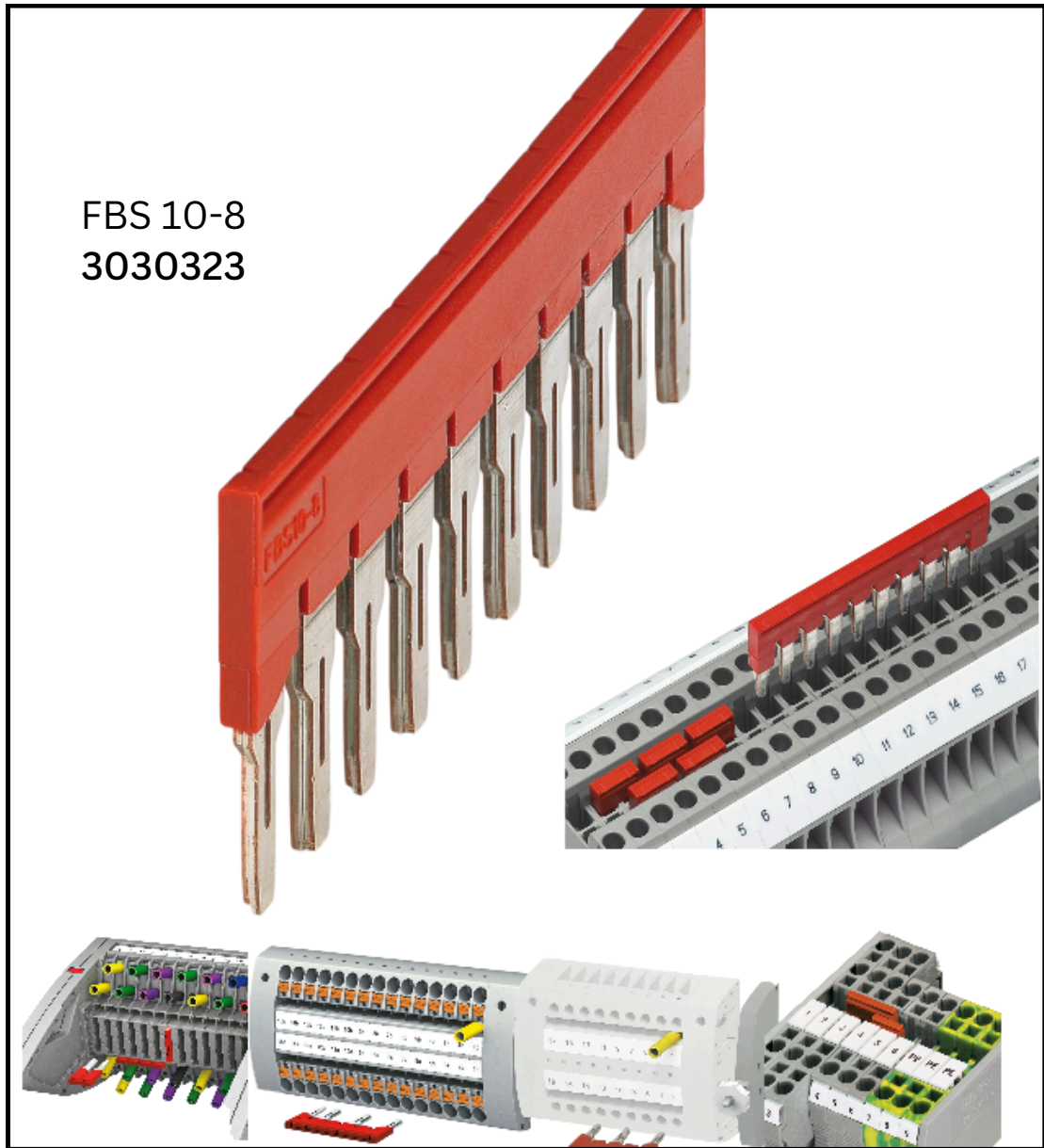
FBS 20-5 BU PLUG-IN BRIDGE | 3036929





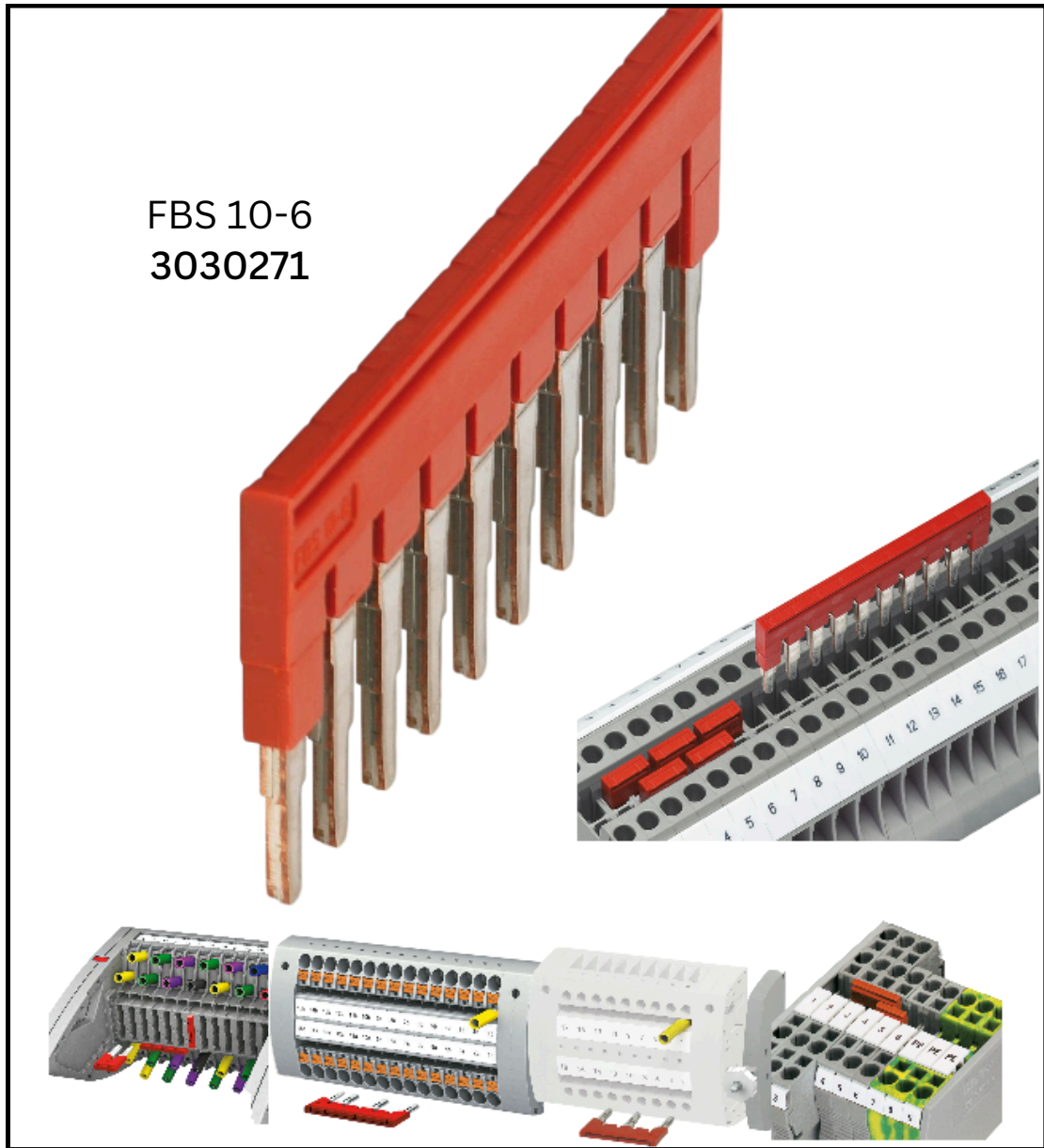
FBS 20-5 PLUG-IN BRIDGE | 3030226





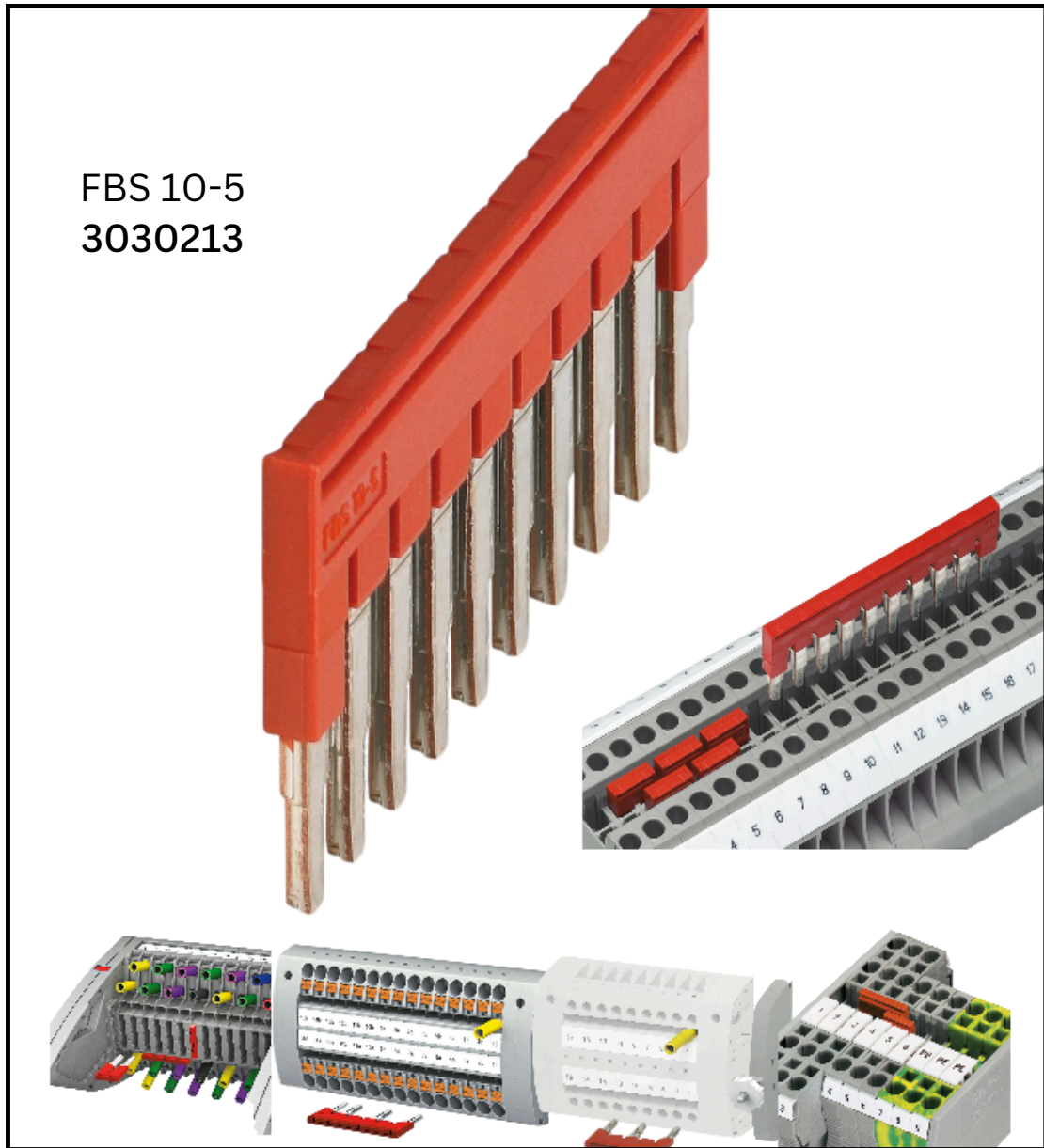
FBS 10-8 PLUG-IN BRIDGE | 3030323





FBS 10-6 PLUG-IN BRIDGE | 3030271





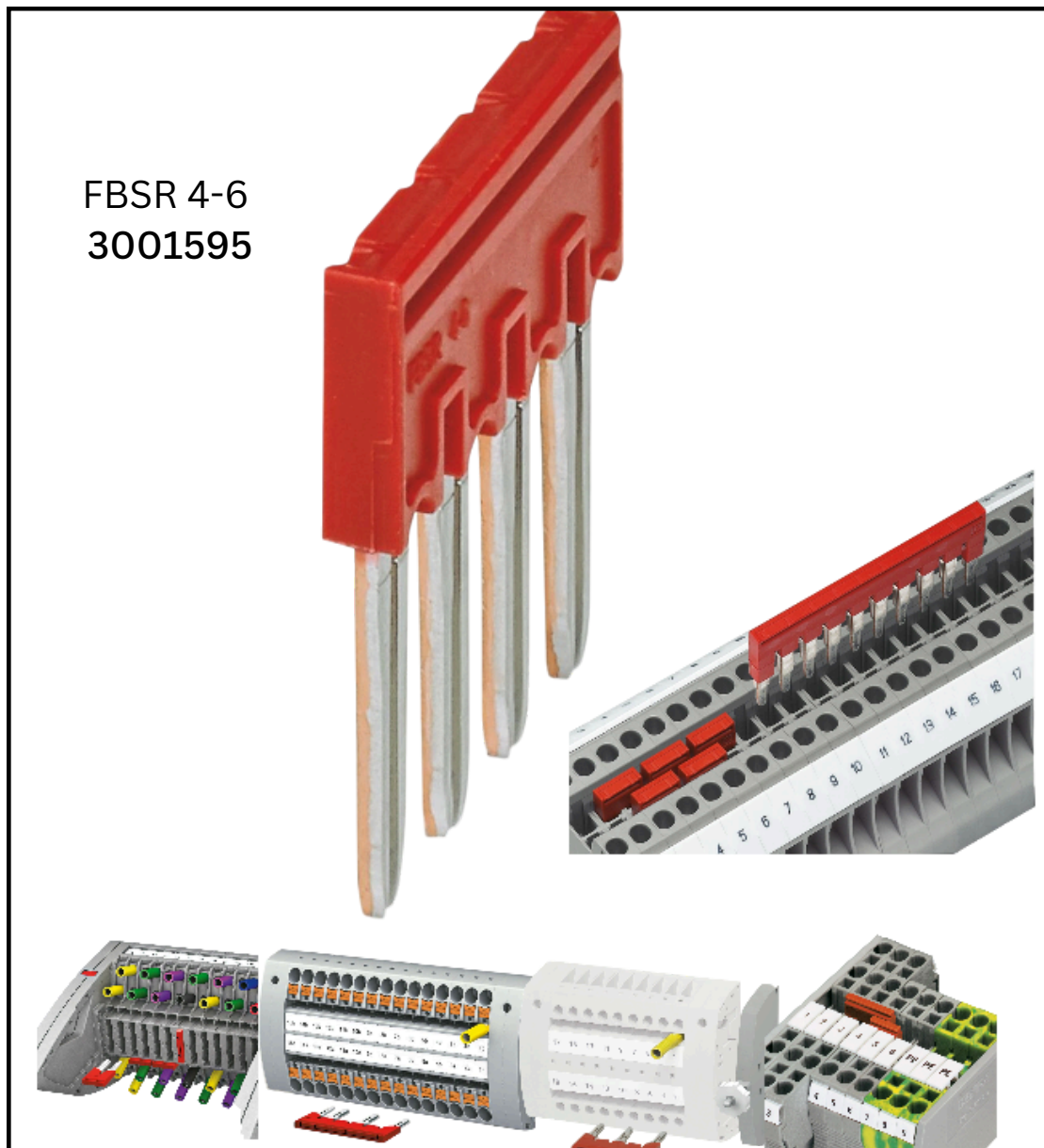
FBS 10-5 PLUG-IN BRIDGE | 3030213





FBS 10-4 PLUG-IN BRIDGE | 3030158

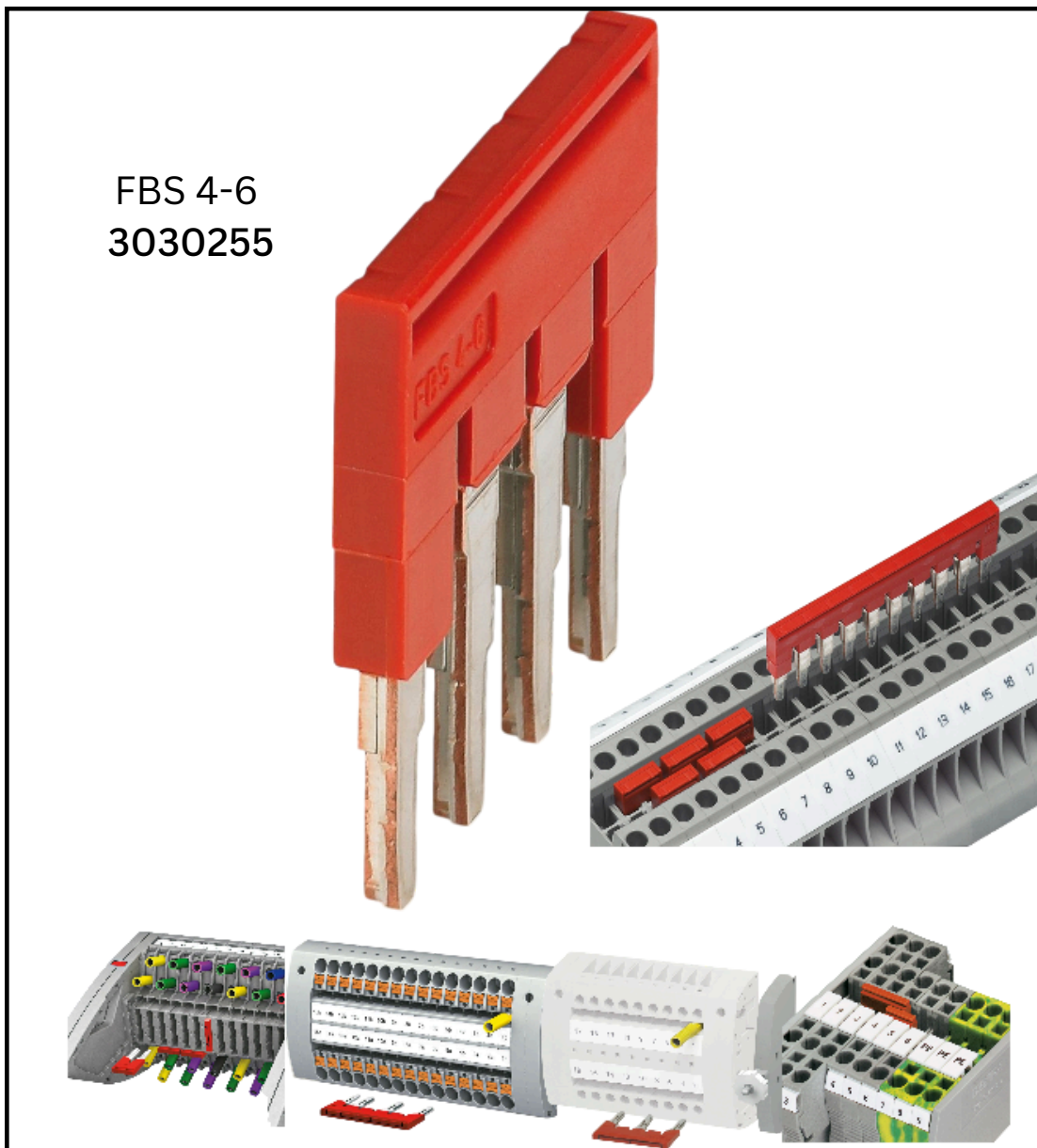




FBSR 4-6 PLUG-IN BRIDGE | 3001595

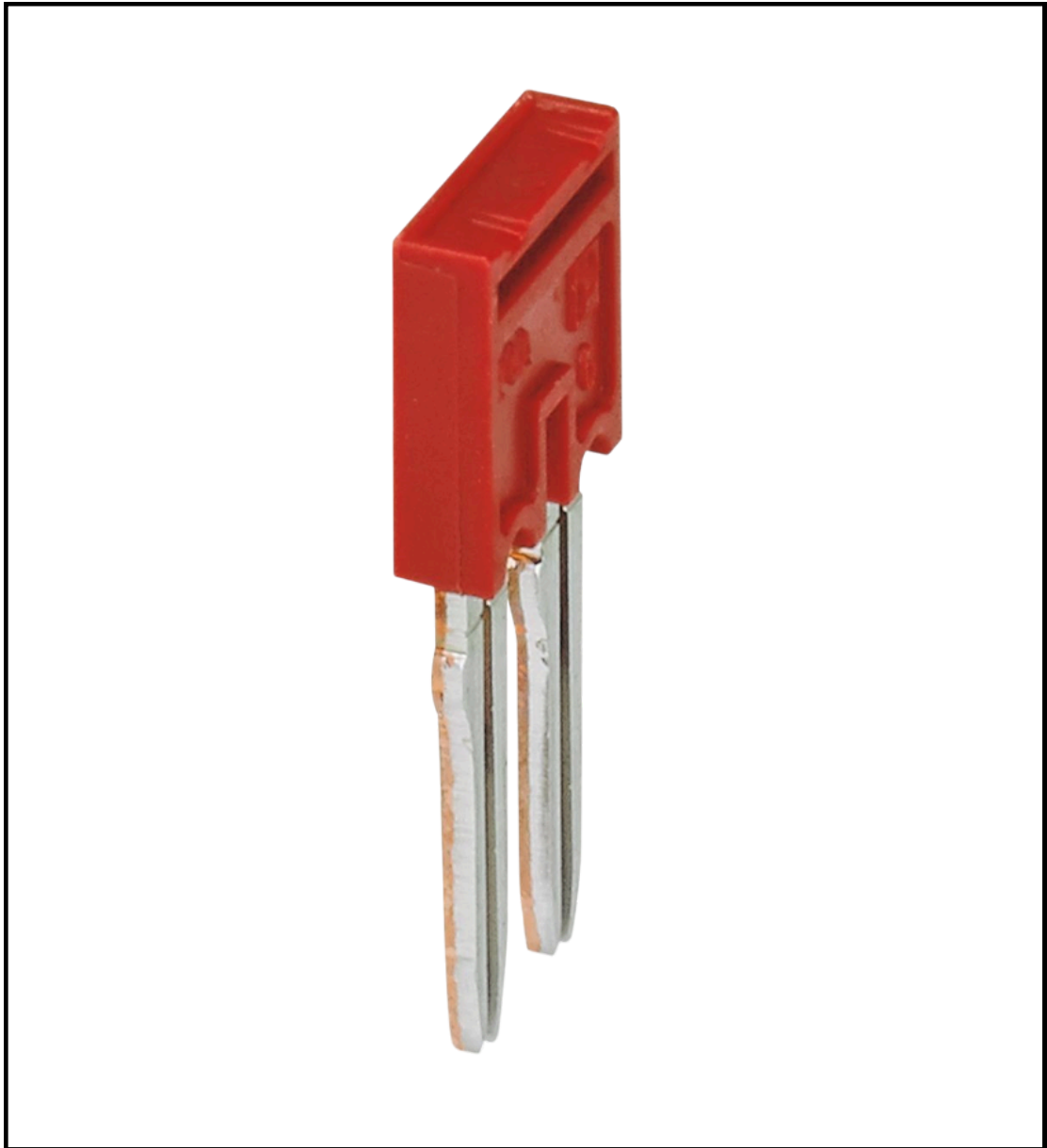


FBS 4-6
3030255



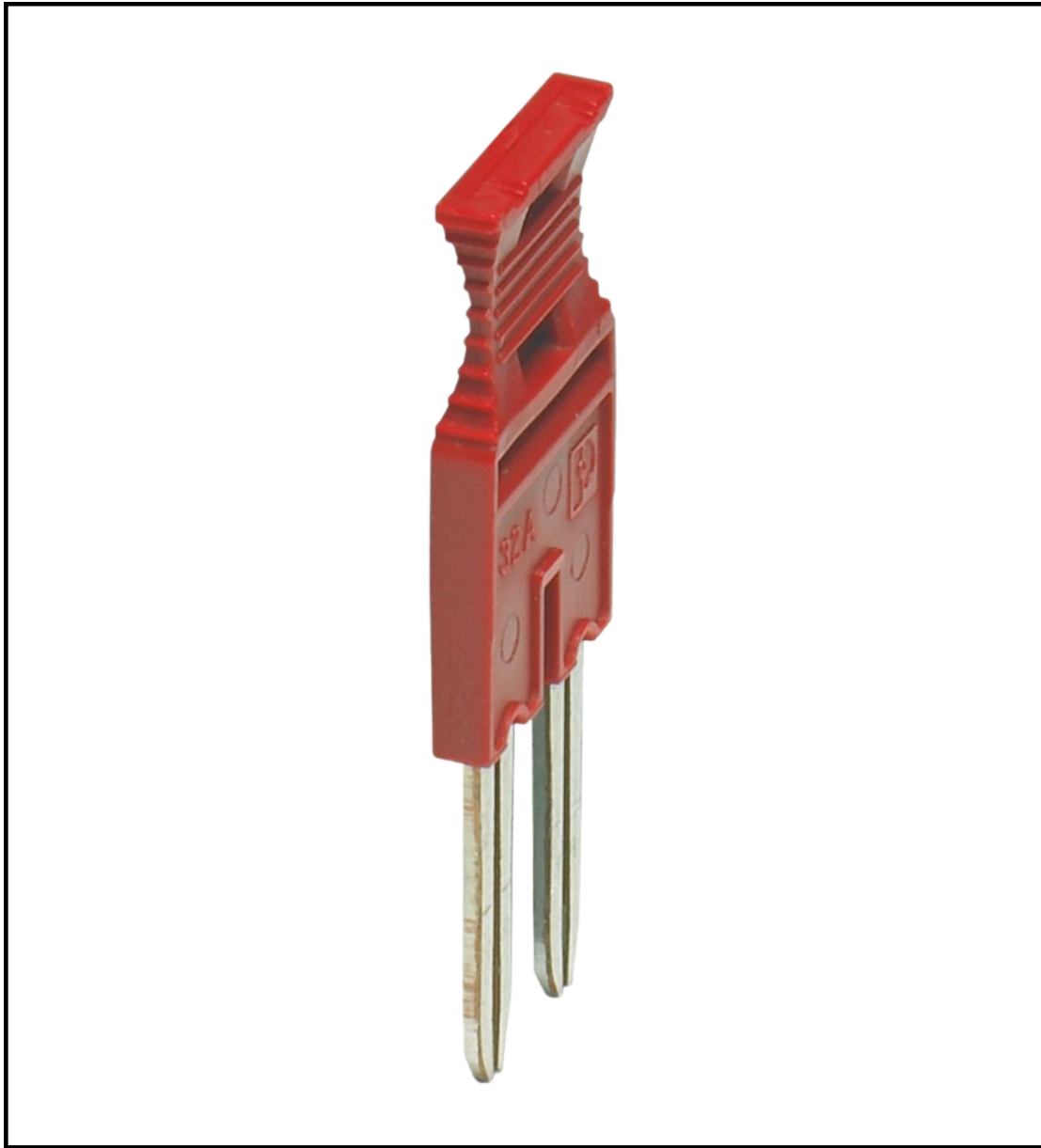
FBS 4-6 PLUG-IN BRIDGE | 3030255





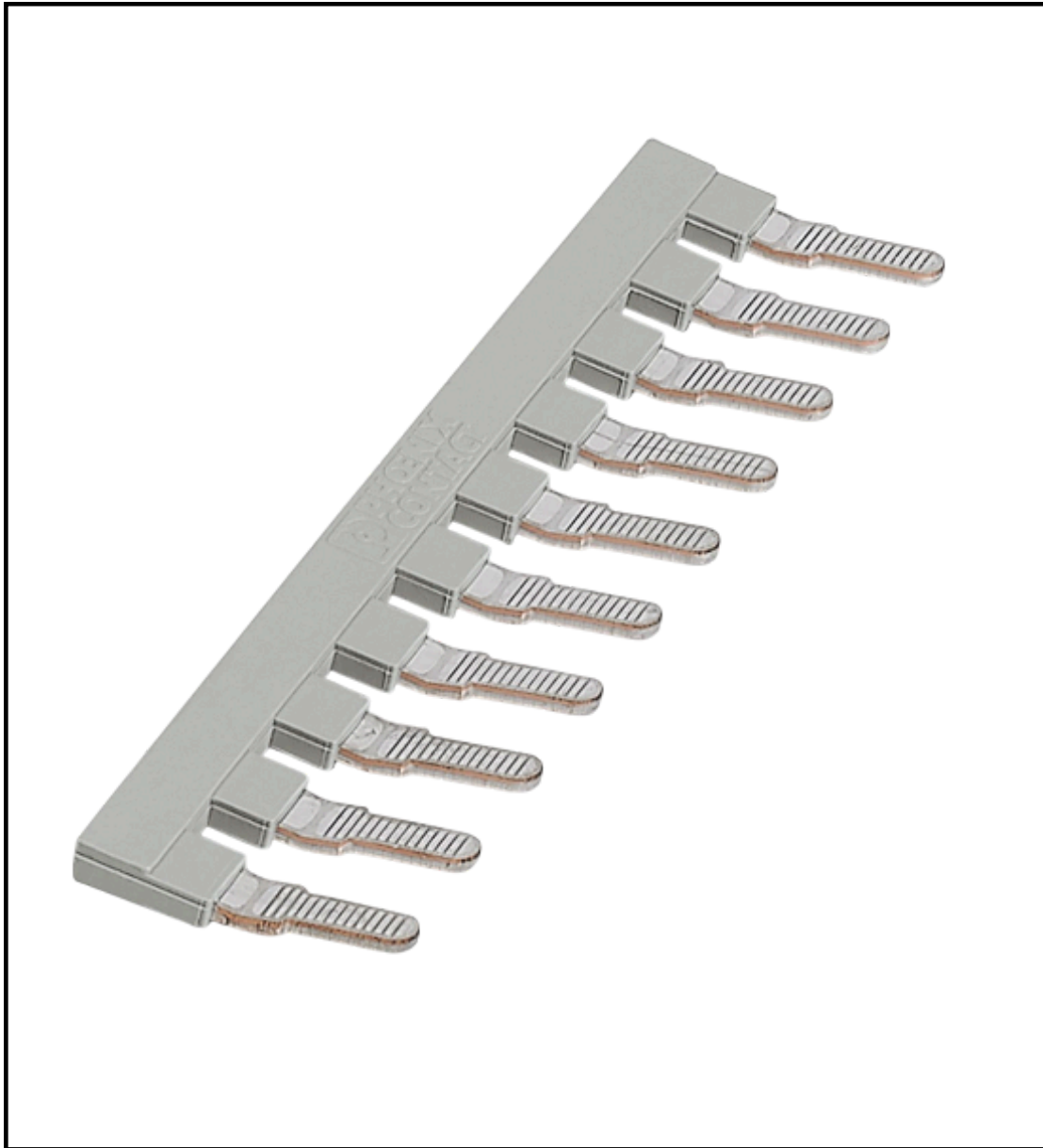
FBSR 2-6 PLUG-IN BRIDGE | 3033715





**FBSRH 2-6 SHORT-CIRCUIT
CONNECTOR | 3033812**

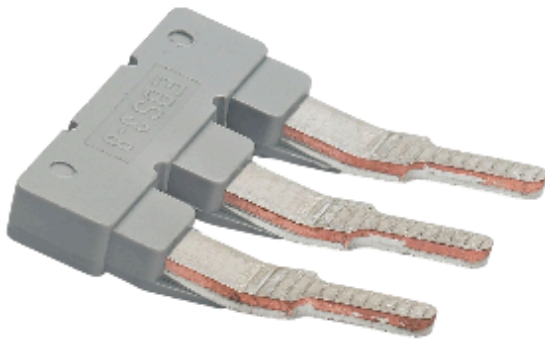




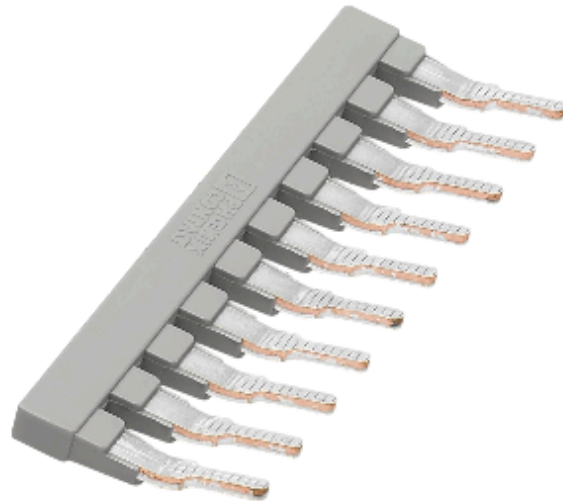
EB 10-12 INSERTION BRIDGE | 3006137



INSERTION BRIDGE



EBS 3- 8 | 3118148



EBS 10- 8 | 3118135

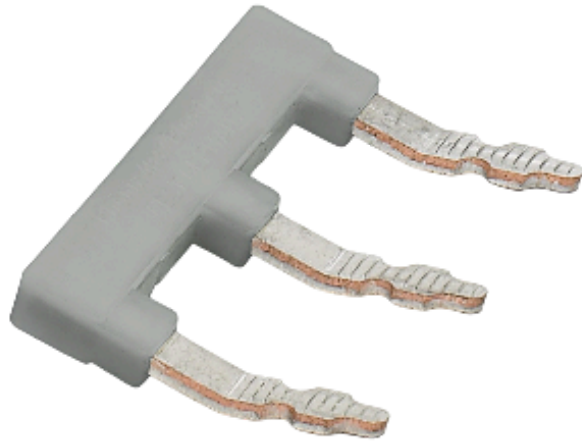
EBS 3- 8 INSERTION BRIDGE | 3118148
EBS 10- 8 INSERTION BRIDGE | 3118135



INSERTION BRIDGE



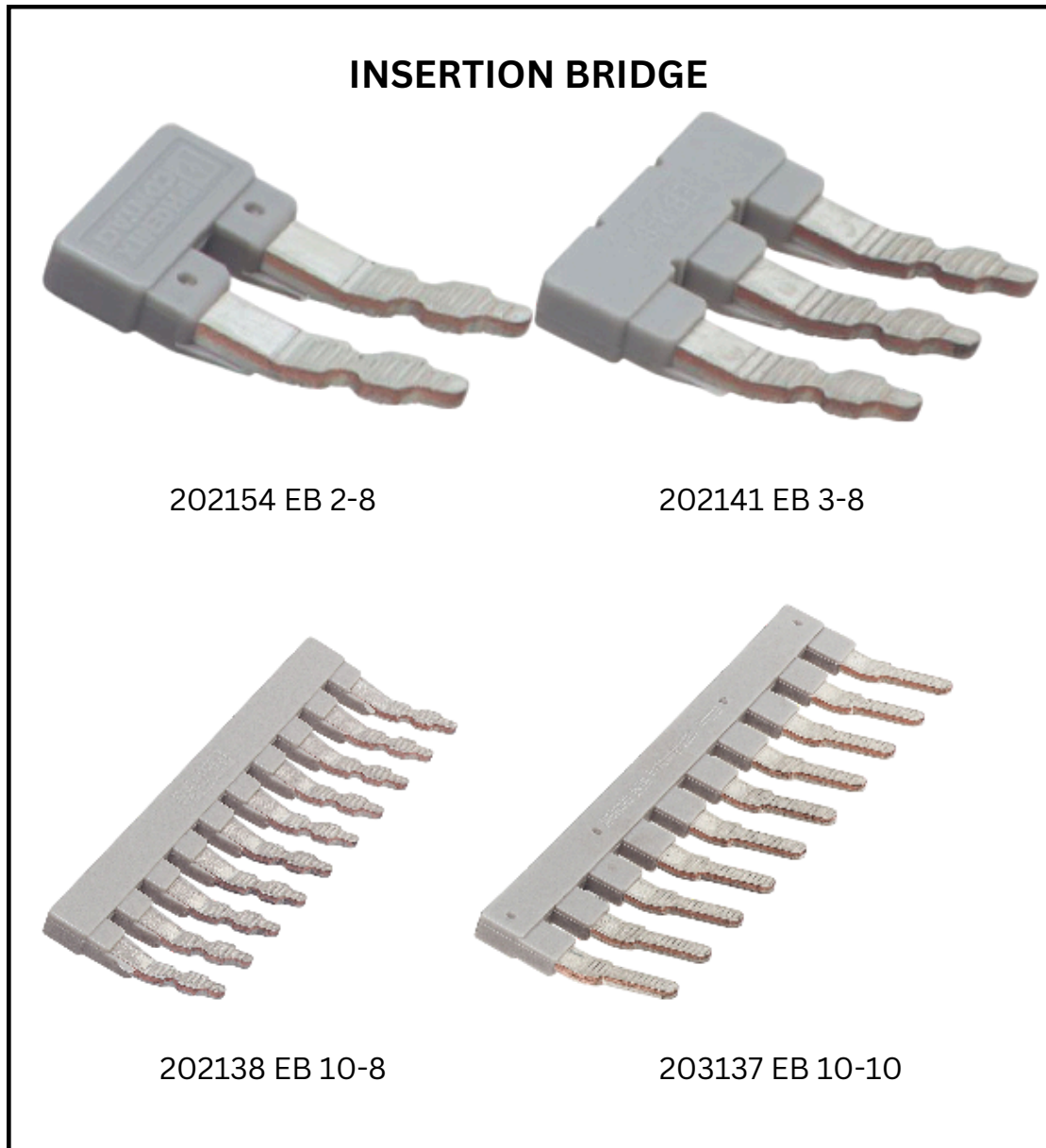
EB 1/3/5/7-8 | 3072340



EB 1/3/5-8 | 3072341

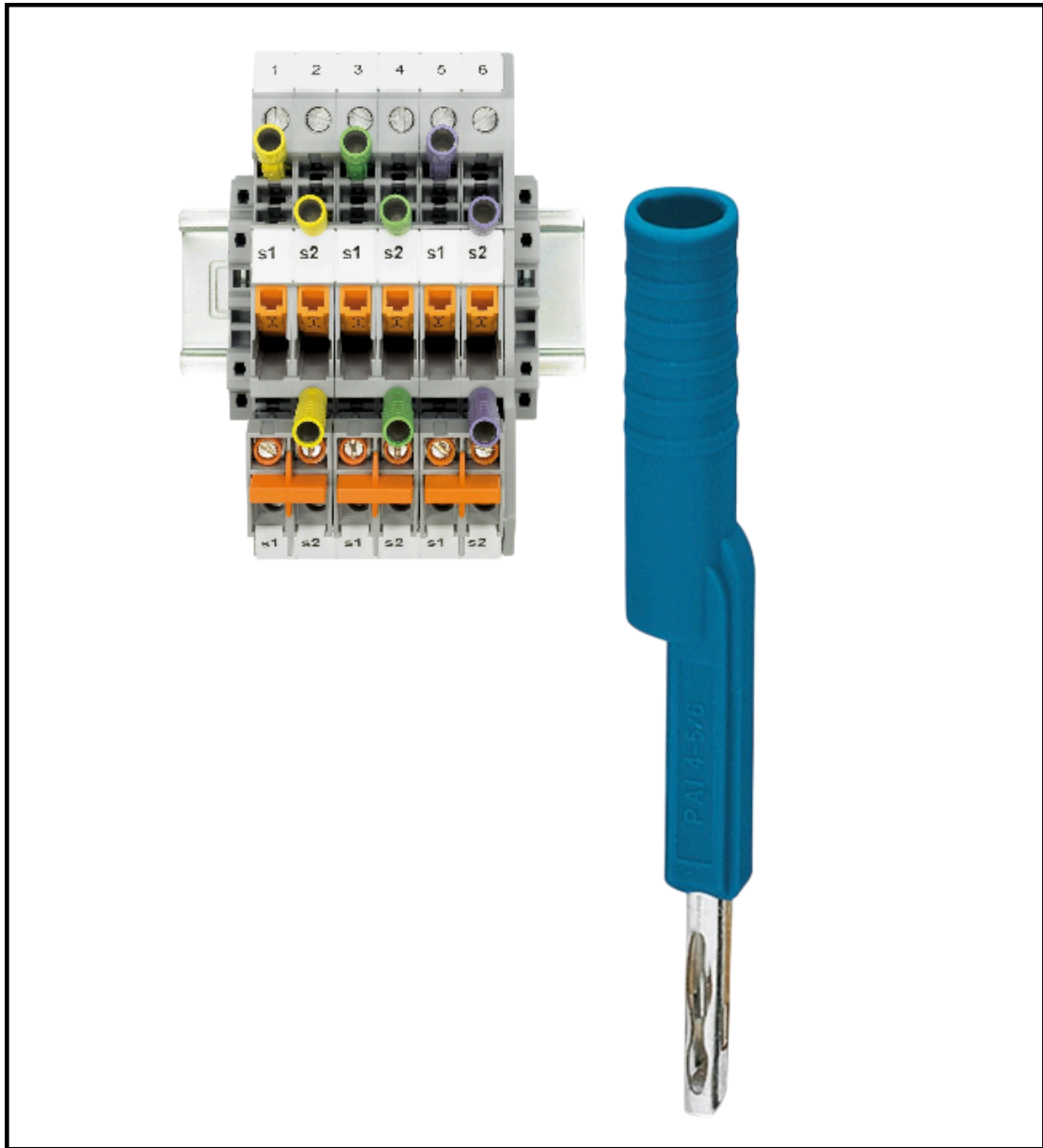
EB 1/3/5/7-8 | 3072340
INSERTION BRIDGE
EB 1/3/5-8 | 3072341
INSERTION BRIDGE





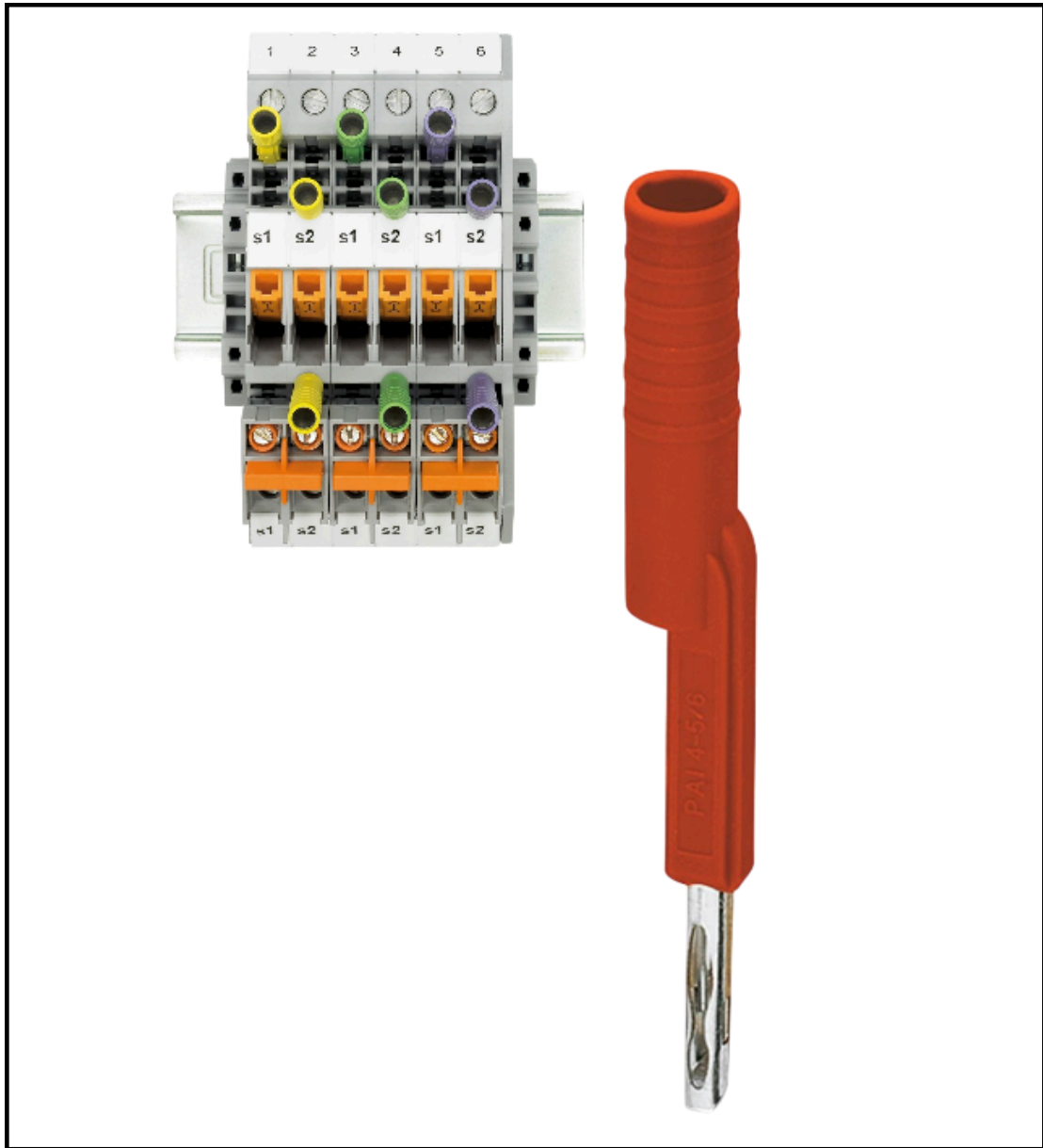
EB 2- 8 INSERTION BRIDGE | 202154
EB 3- 8 INSERTION BRIDGE | 202141
EB 10- 8 INSERTION BRIDGE | 202138
EB 10-10 INSERTION BRIDGE | 203137





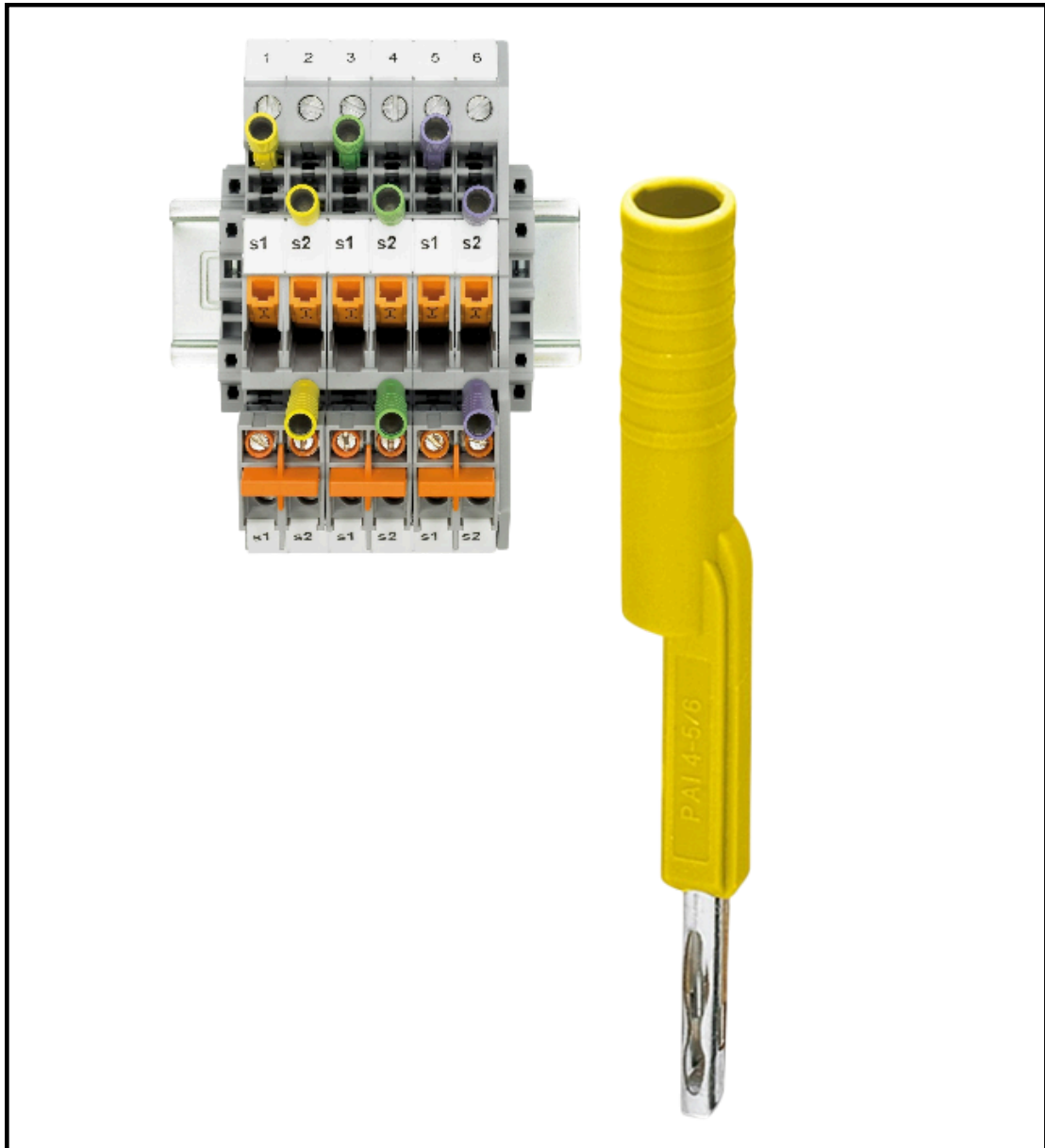
**PAI-4-FIX-5/6 BU
TEST ADAPTER | 3035975**





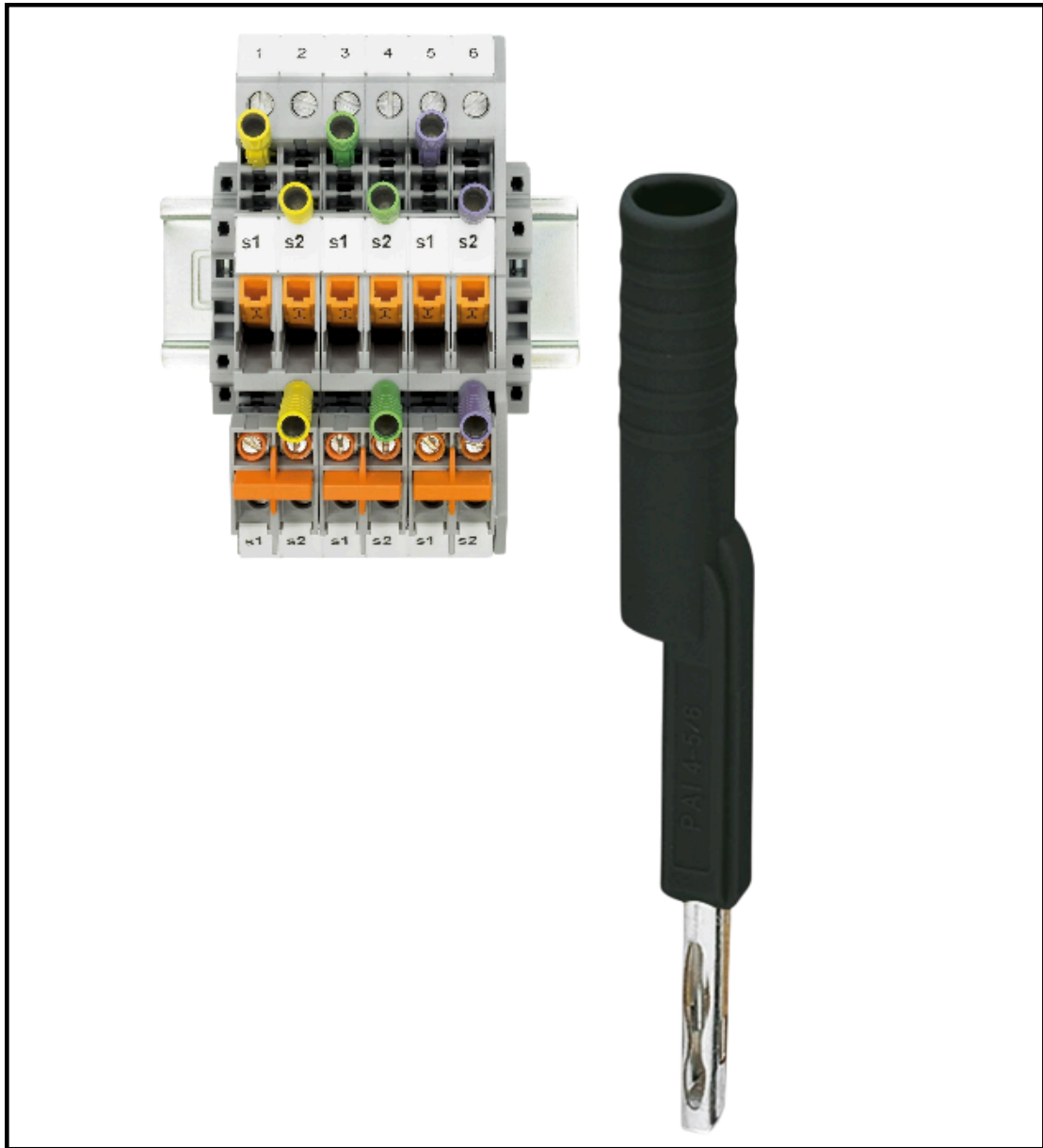
**PAI-4-FIX-5/6 RD
TEST ADAPTER | 3035976**





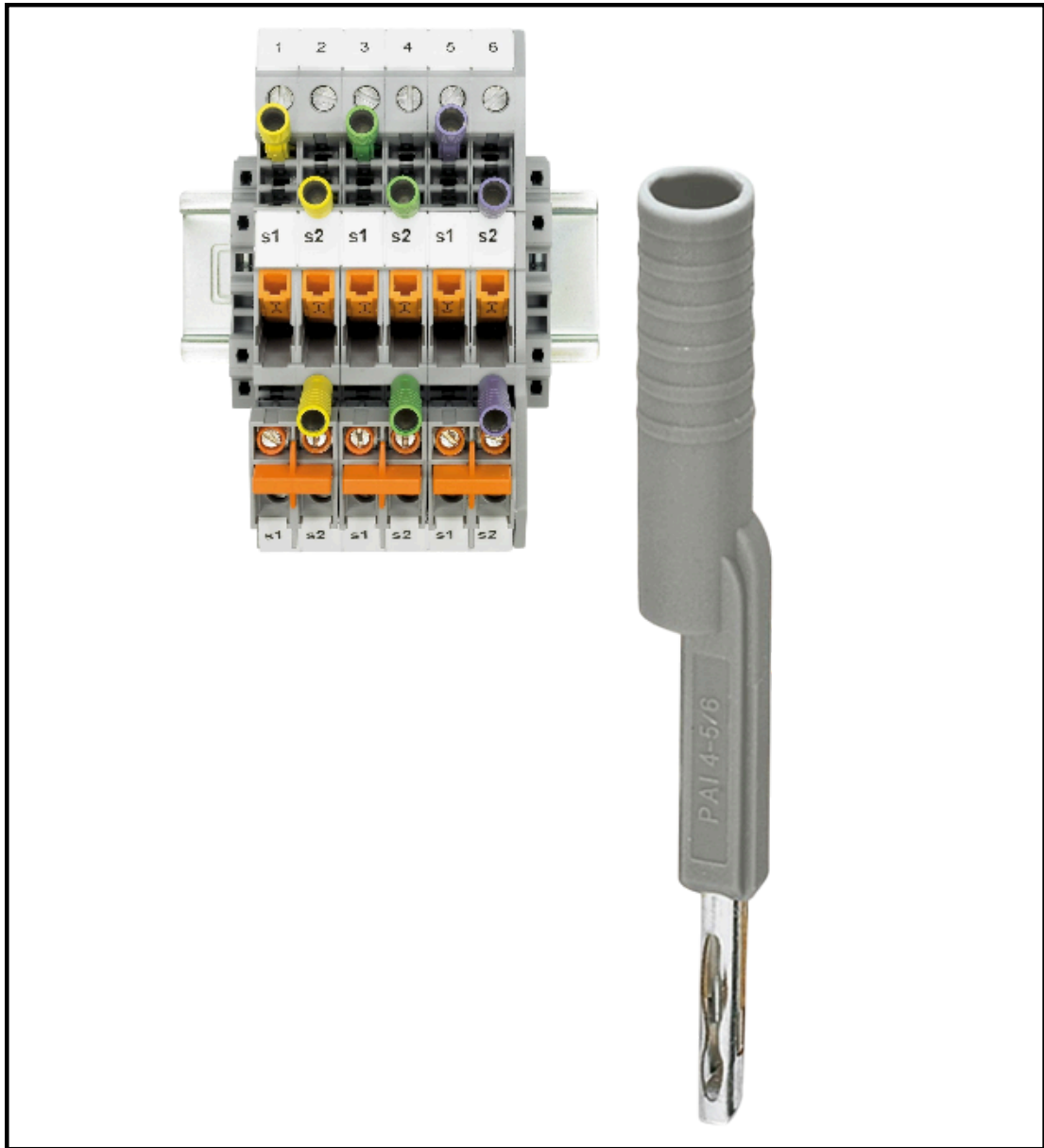
**PAI-4-FIX-5/6 YE
TEST ADAPTER | 3035977**





**PAI-4-FIX-5/6 BK
TEST ADAPTER | 3035980**





**PAI-4-FIX-5/6 GY
TEST ADAPTER | 3035982**



Imaxx Energie Solutions Corp is a leading provider of innovative, high-quality, and energy-efficient products. Our mission is to meet the growing demands of our rapidly expanding industry and population by delivering exceptional solutions that exceed our customers' expectations.

We are committed to providing our customers with products from renowned and respected brands, including Rittal Enclosures and Cooling Units, Phoenix Contact, Leipole, and Siemens. Our extensive portfolio of products ensures that we can meet the diverse needs of our clients from industrial automation, power substations, and data center infrastructure.

For more information on our latest product, visit www.imaxxenergie.com

